

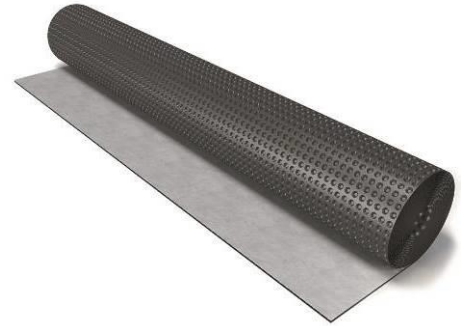


PLANTER geo

Dimpled HDPE membrane with geotextile for construction of drainage for foundations, ballasted and green roofs

Product description

PLANTER geo is a double-layer dimpled membrane. The first layer of the material is produced by extrusion method on a base of high-density polyethylene (HDPE) covered with conic studs 8 mm in height and 10 mm in diameter. The second layer is a thermally bounded geotextile glued to the membrane.



The membrane is used for:

- construction of vertical and horizontal drainage for foundations;
- construction of drainage, protective and separating layer for ballasted roofs and green roofs.

The material is very lightweight and easy to install, herein it is featured by high strength properties. PLANTER is resistant to chemicals, mould and bacteria, roots of plants and ultraviolet radiation.

Performance of works

The wall drainage can be fixed at the basement level with double-sided self-adhesive sealant tape NICOBAND DUO 150 mm wide. For this purpose, stick the tape at the level of 200-300 mm above the waterproofing membrane and attach PLANTER geo to it. Places of the vertical junction of contiguous rolls should also be sealed with the same tape. Or else, fix the dimpled membrane mechanically. The lateral overlapping of adjacent rolls should make at least 4 studs. The upper edge of the dimpled HDPE membrane is covered with an edge profile.

Storage

Rolls of PLANTER are delivered on pallets. Rolls should be stored indoors in a dry place in their original packaging and taken to the construction site ready to use. Keep the minimum distance of 1 m from any source of heat. Shelf life if all storage requirements are met: 12 months from the date of production.

Main characteristics

Properties	Performance
Length x width, m	15 x 2.0
Mass per unit area, kg/m ²	0.65
Compressive strength, kPa	≥350
Tensile strength L / T, N/50 mm	≥420 / ≥420
Elongation, %	≥30
Water flow rate, l/m ² *sec	5.1
Studs height, mm	8