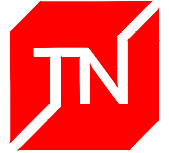
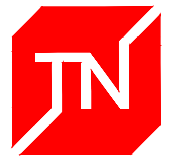


TECHNONICOL



TECHNICAL SOLUTION FOR A PITCHED ROOF WITH THERMAL INSULATION OF STONE WOOL

TN_SHINGLES_MANSARD_EN



Register of drawings

No	Name	DWG No.
01	General structure of the TN-Shingles Mansard roofing system	01
1.1	Eaves overhang. Junction of the roof to the facade system TN-Facade Eco.	1.1
1.2	Eaves overhang. Junction of the roof to the facade system TN-Facade Standard.	1.2
1.3	Eaves overhang. Junction of the roof to the log wall.	1.3
1.4	Eaves overhang. Junction of the roof to the facade system TN-Facade Decor.	1.4
2.1	Gable. Junction of the roof to the facade system TN-Facade Eco.	2.1
2.2	Gable. Junction of the roof to the facade system TN-Facade Standard.	2.2
2.3	Gable. Junction of the roof to the log wall.	2.3
2.4	Gable. Junction of the roof to the facade system TN-Facade Decor.	2.4
3.1	Side abutment to the wall. Junction of the facade system TN-Facade Eco.	3.1
3.2	Side abutment to the wall. Junction of the facade system TN-Facade Standard.	3.2
3.3	Side abutment to the wall. Junction of the roof to the log wall.	3.3
3.4	Side abutment to the wall. Junction of the facade system TN-Facade Decor.	3.4
4.1	End abutment to the wall. Junction of the facade system TN-Facade Eco.	4.1
4.2	End abutment to the wall. Junction of the facade system TN-Facade Standard.	4.2
4.3	End abutment to the wall. Junction of the roof to the log wall.	4.3
4.4	End abutment to the wall. Junction of the facade system TN-Facade Decor.	4.4
5.1	TECHNONICOL prefabricated ventilation ridge profile. The roof slope from 12 to 18 degrees.	5.1

TN_SHINGLES_MANSARD_EN

DESIGN

APPROVED

SCALE

DATE

Register of drawings

DWG No.

REV.

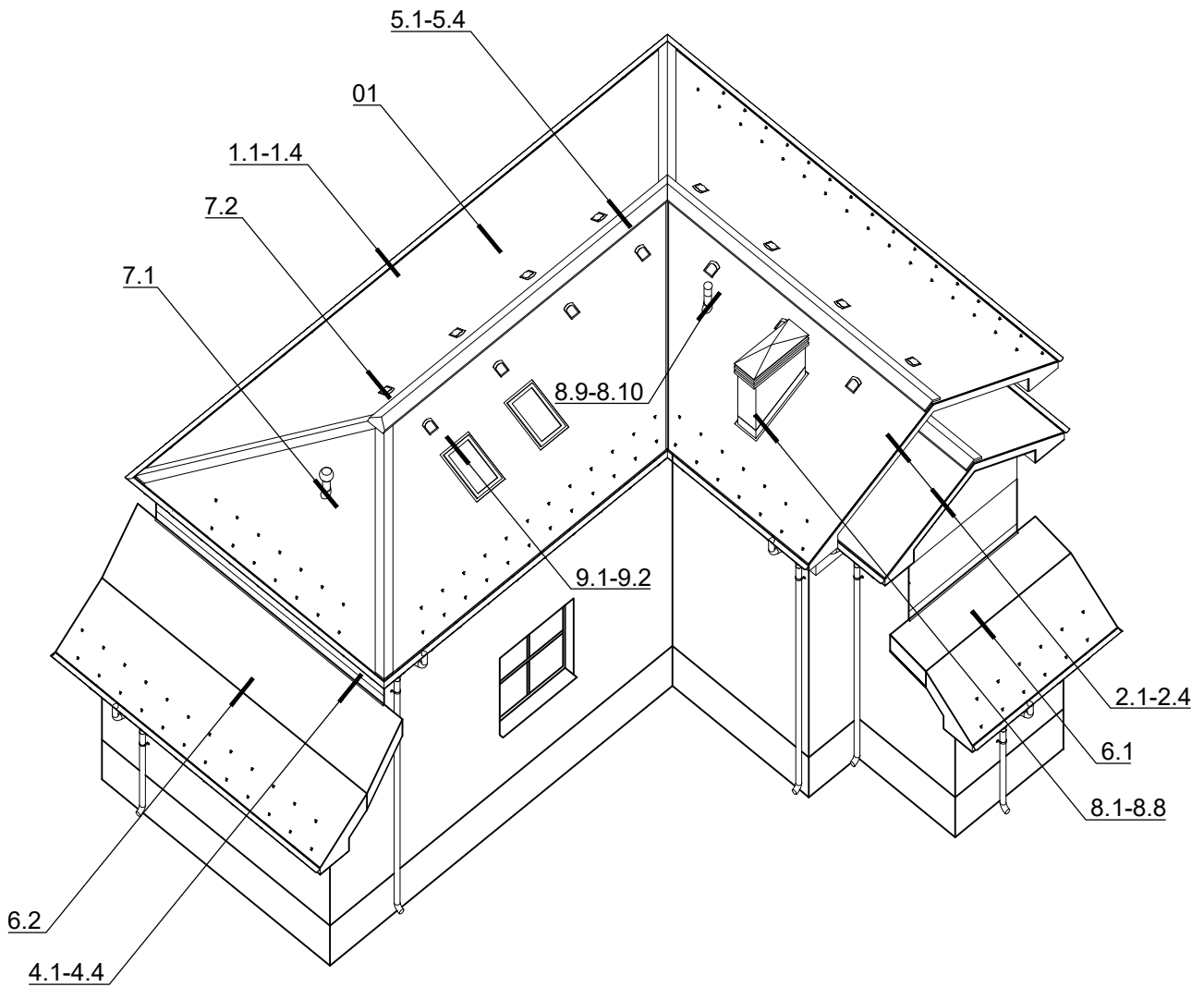
REV.	DATE	DESCRIPTION	CHECKED
------	------	-------------	---------



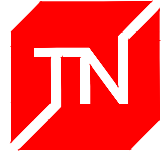
Register of drawings

No	Name	DWG No.
5.2	TECHNONICOL prefabricated ventilation ridge profile. The roof slope more than 18 degrees.	5.2
5.3	Ventilation ridge. The roof slope from 12 to 18 degrees.	5.3
5.4	Ventilation ridge. The roof slope more than 18 degrees.	5.4
6.1	External roof bend	6.1
6.2	Internal roof bend	6.2
7.1	TECHNONICOL PILOT roof aerator	7.1
7.2	TECHNONICOL KTV roof vent	7.2
8.1	Junction to the chimney. The roof slope from 12 to 18 degrees	8.1
8.2	Junction to the chimney. The roof slope from 12 to 18 degrees. Section 1-1	8.2
8.3	Junction to the chimney. The roof slope more than 18 degrees	8.3
8.4	Junction to the chimney. The roof slope more than 18 degrees. Section 2-2	8.4
8.5	Junction to the insulated chimney. The roof slope from 12 to 18 degrees	8.5
8.6	Junction to the insulated chimney. The roof slope from 12 to 18 degrees. Section 1-1	8.6
8.7	Junction to the insulated chimney. The roof slope more than 18 degrees	8.7
8.8	Junction to the insulated chimney. The roof slope more than 18 degrees. Section 2-2	8.8
8.9	Junction to the pipe penetration with the use of rubber collar	8.9
8.10	Junction to the pipe penetration with the use of rubber collar. Section 1-1	8.10
9.1	Junction to skylight window. Longitudinal section	9.1
9.2	Junction to skylight window. Cross section	9.2

				TN_SHINGLES_MANSARD_EN	DESIGN	APPROVED
				Register of drawings	SCALE	DATE
REV.	DATE	DESCRIPTION	CHECKED		DWG No.	REV.

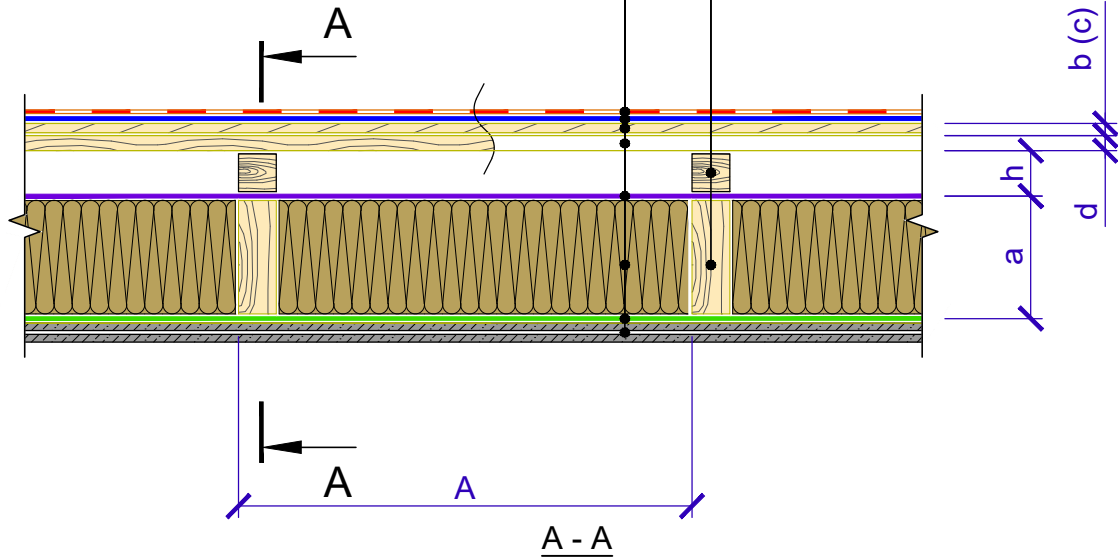


				TN_SHINGLES_MANSARD_EN	DESIGN	APPROVED
				Scheme of labeling of system details	SCALE	DATE
REV.	DATE	DESCRIPTION	CHECKED		DWG No.	REV.



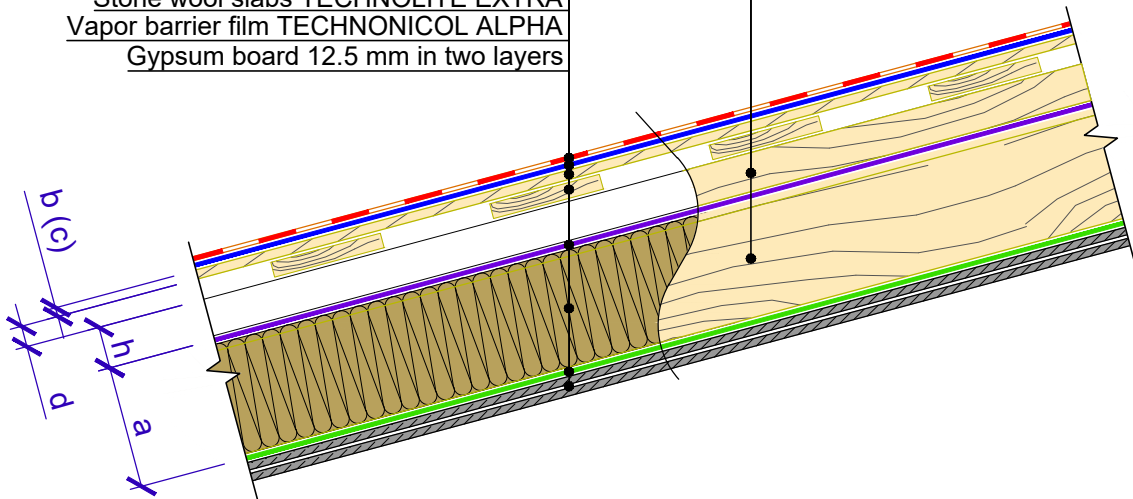
TECHNONICOL roofing shingles
 Underlayment membrane of UNDERLAY series
 Solid base (OSB-3 or plywood)
 Counter-batten
 Diffusion membrane TECHNOLITE ALPHA
 Stone wool slabs TECHNOLITE EXTRA
 Vapor barrier film TECHNOLITE ALPHA
 Gypsum board 12.5 mm in two layers

Ventilation space batten
 Roof rafter



TECHNONICOL roofing shingles
 Underlayment membrane of UNDERLAY series
 Solid base (OSB-3 or plywood)
 Counter-batten
 Diffusion membrane TECHNOLITE ALPHA
 Stone wool slabs TECHNOLITE EXTRA
 Vapor barrier film TECHNOLITE ALPHA
 Gypsum board 12.5 mm in two layers

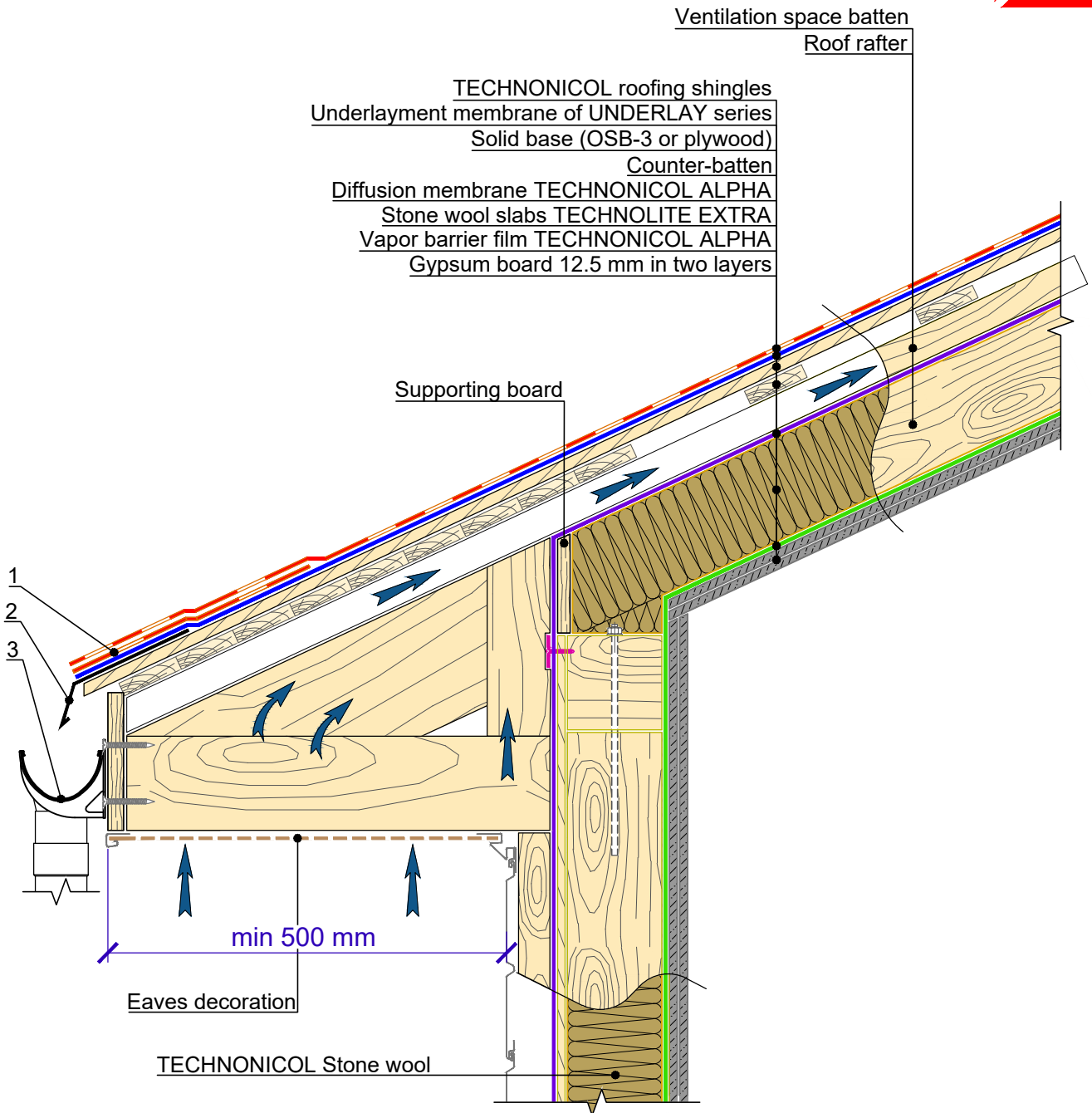
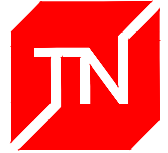
Ventilation space batten
 Roof rafter



Notes:

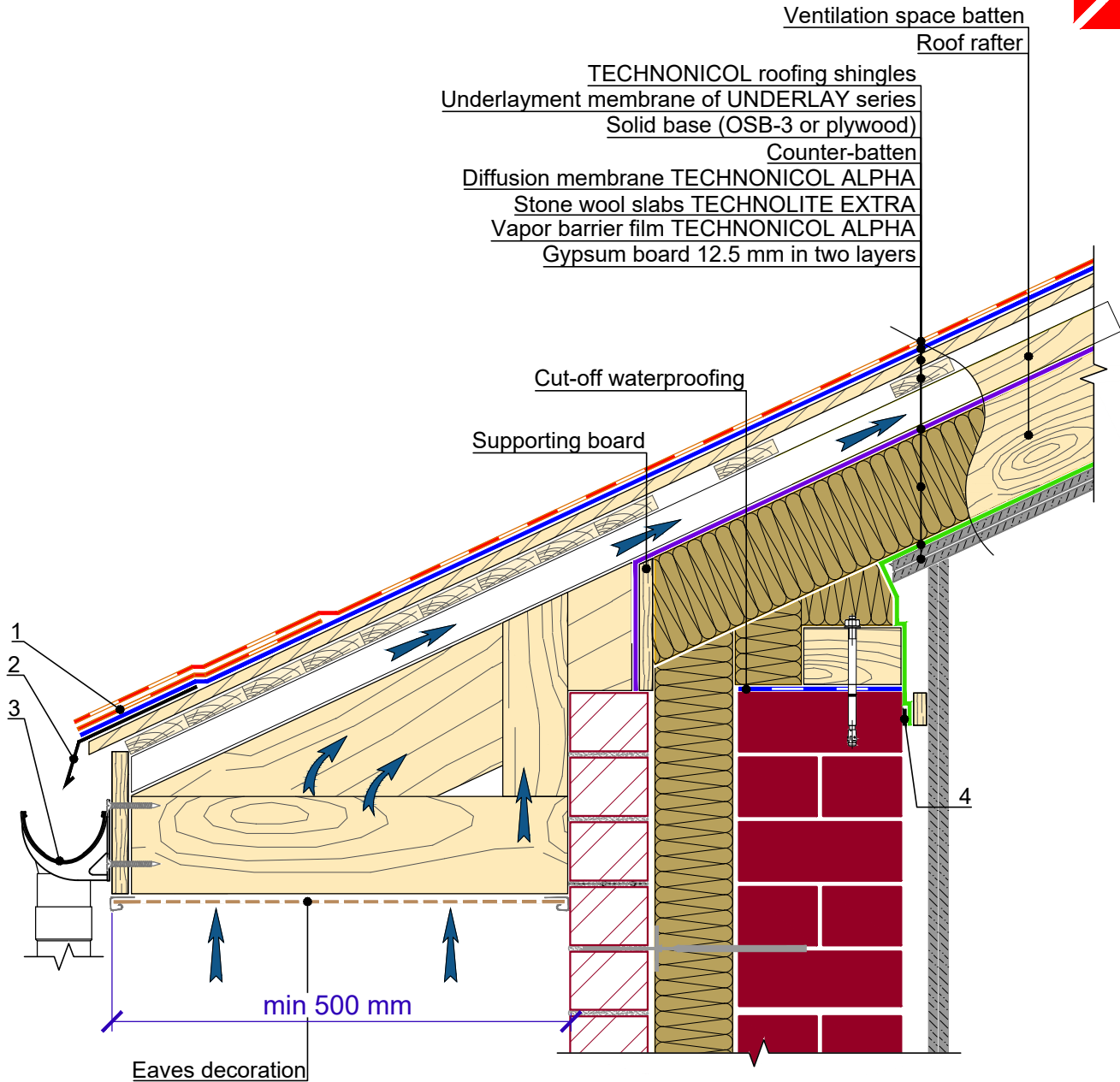
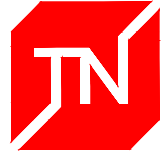
- A - Rafter pitch
- a - Roof rafter height
- b - Thickness of OSB-3
- c - Thickness of plywood
- d - Thickness of roof battens
- h - Thickness of ventilation space battens

				TN_SHINGLES_MANSARD_EN	DESIGN	APPROVED
				General structure of the TN-Shingles Mansard roofing system	SCALE	DATE
REV.	DATE	DESCRIPTION	CHECKED		DWG No. 01 - 2021.11	REV.



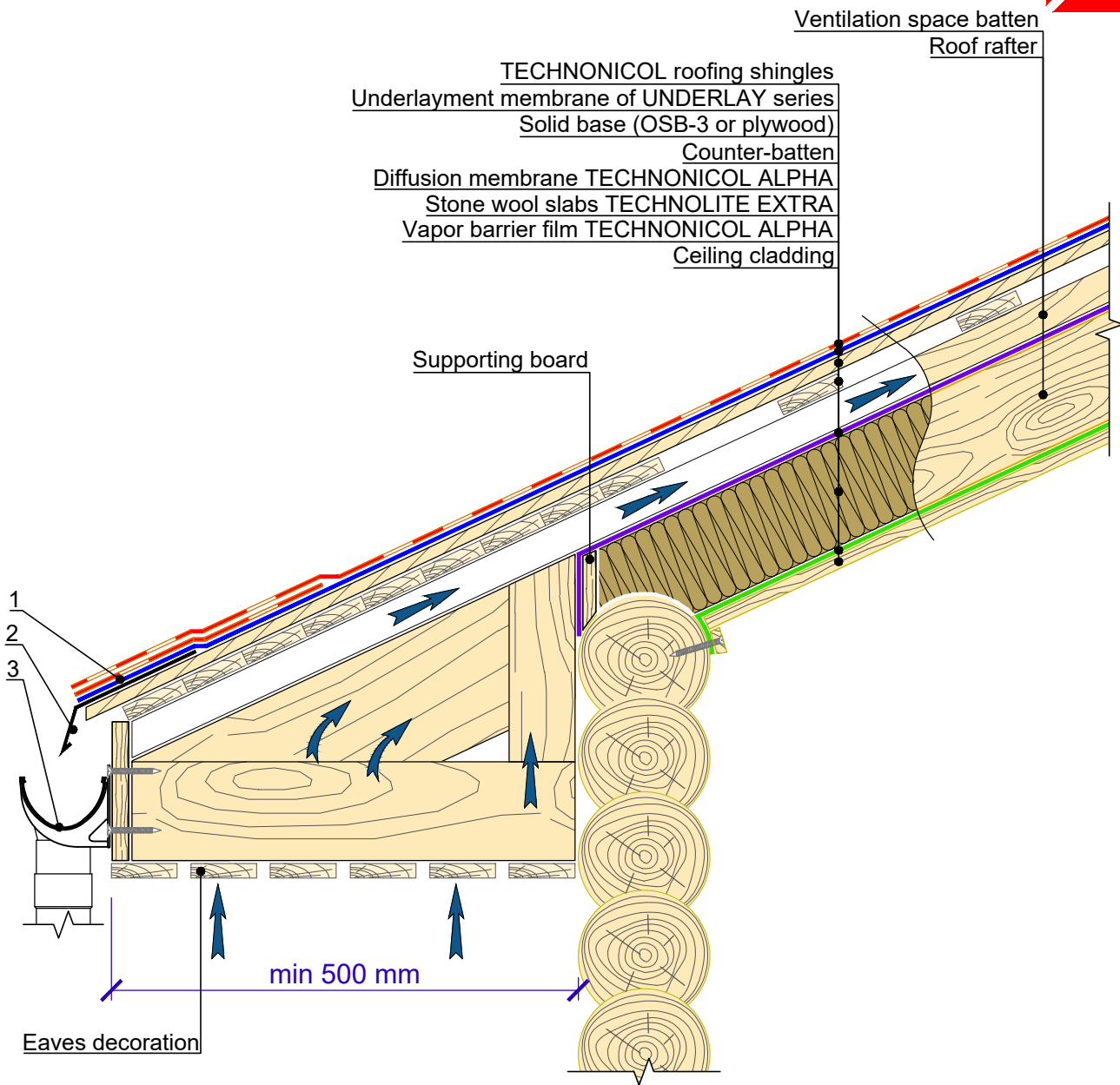
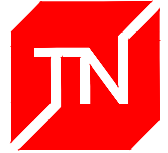
Specification of detail DWG No. 1.1 - 2021.11

Position	Name	Consumption per one linear meter	Unit	Note	
1	Hip&ridge shingles	0.25	m ²		
2	Metal flashing	0.5	pcs.	length 2 m	
3	Gutter	0.4 / 0.7	pcs.	length 3 m / 1.5 m	
TN_SHINGLES_MANSARD_EN				DESIGN	APPROVED
Eaves overhang. Junction of the roof to the facade system TN-Facade Eco.				SCALE	DATE
				DWG No. 1.1 - 2021.11	REV.
REV.	DATE	DESCRIPTION	CHECKED		



Specification of detail DWG No. 1.2 - 2021.11

Position	Name	Consumption per one linear meter	Unit	Note	
1	Hip&ridge shingles	0.25	m ²		
2	Metal flashing	0.5	pcs.	length 2 m	
3	Gutter	0.4 / 0.7	pcs.	length 3 m / 1.5 m	
4	Adhesive tape	upon the project	m		
				DESIGN	APPROVED
				SCALE	DATE
REV.	DATE	DESCRIPTION	CHECKED	Eaves overhang. Junction of the roof to the facade system TN-Facade Standard.	
				DWG No. 1.2 - 2021.11	REV.



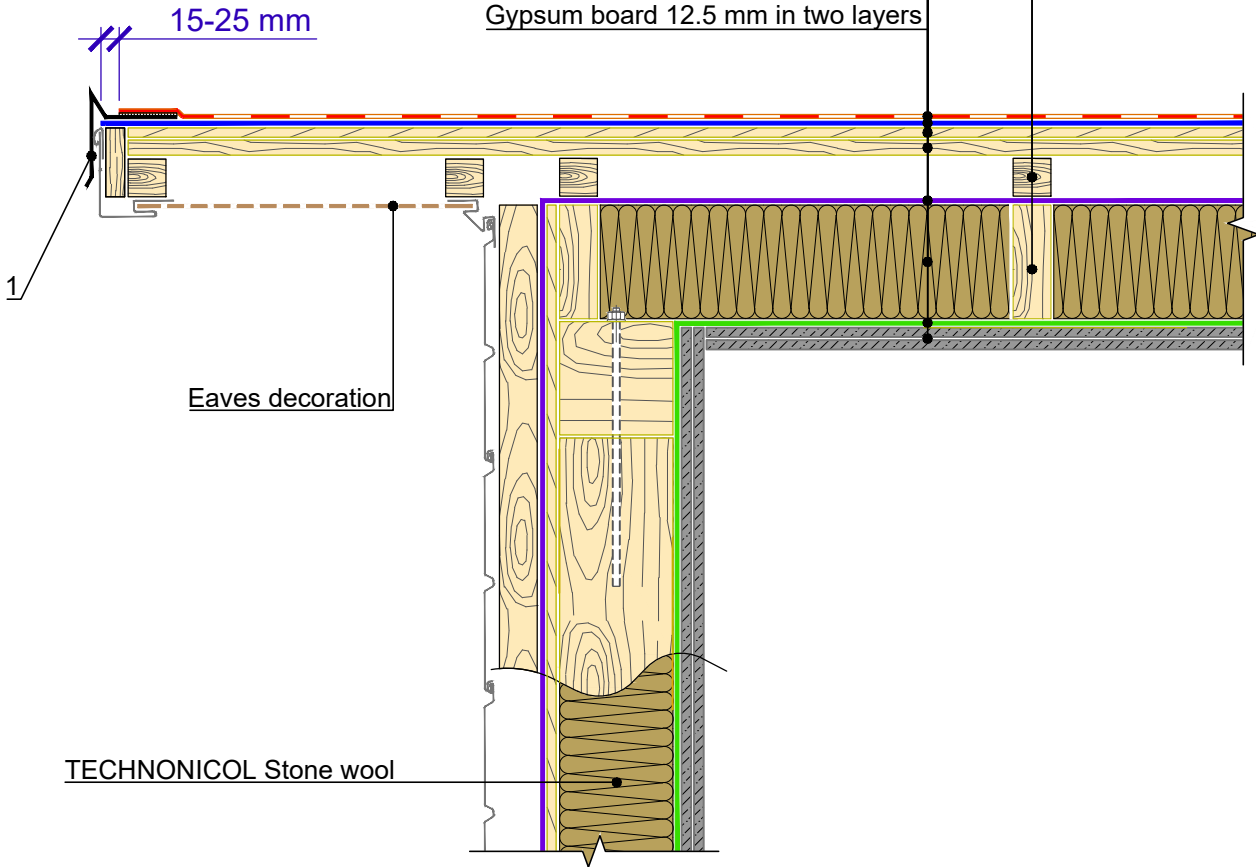
Specification of detail DWG No. 1.3 - 2021.11

Position	Name	Consumption per one linear meter	Unit	Note	
1	Hip&ridge shingles	0.25	m ²		
2	Metal flashing	0.5	pcs.	length 2 m	
3	Gutter	0.4 / 0.7	pcs.	length 3 m / 1.5 m	
TN_SHINGLES_MANSARD_EN				DESIGN	APPROVED
Eaves overhang. Junction of the roof to the log wall.				SCALE	DATE
				DWG No. 1.3 - 2021.11	REV.
REV.	DATE	DESCRIPTION	CHECKED		



TECHNONICOL roofing shingles
 Underlayment membrane of UNDERLAY series
 Solid base (OSB-3 or plywood)
 Counter-batten
 Diffusion membrane TECHNOMICOL ALPHA
 Stone wool slabs TECHNOLITE EXTRA
 Vapor barrier film TECHNOMICOL ALPHA
 Gypsum board 12.5 mm in two layers

Ventilation space batten
 Roof rafter

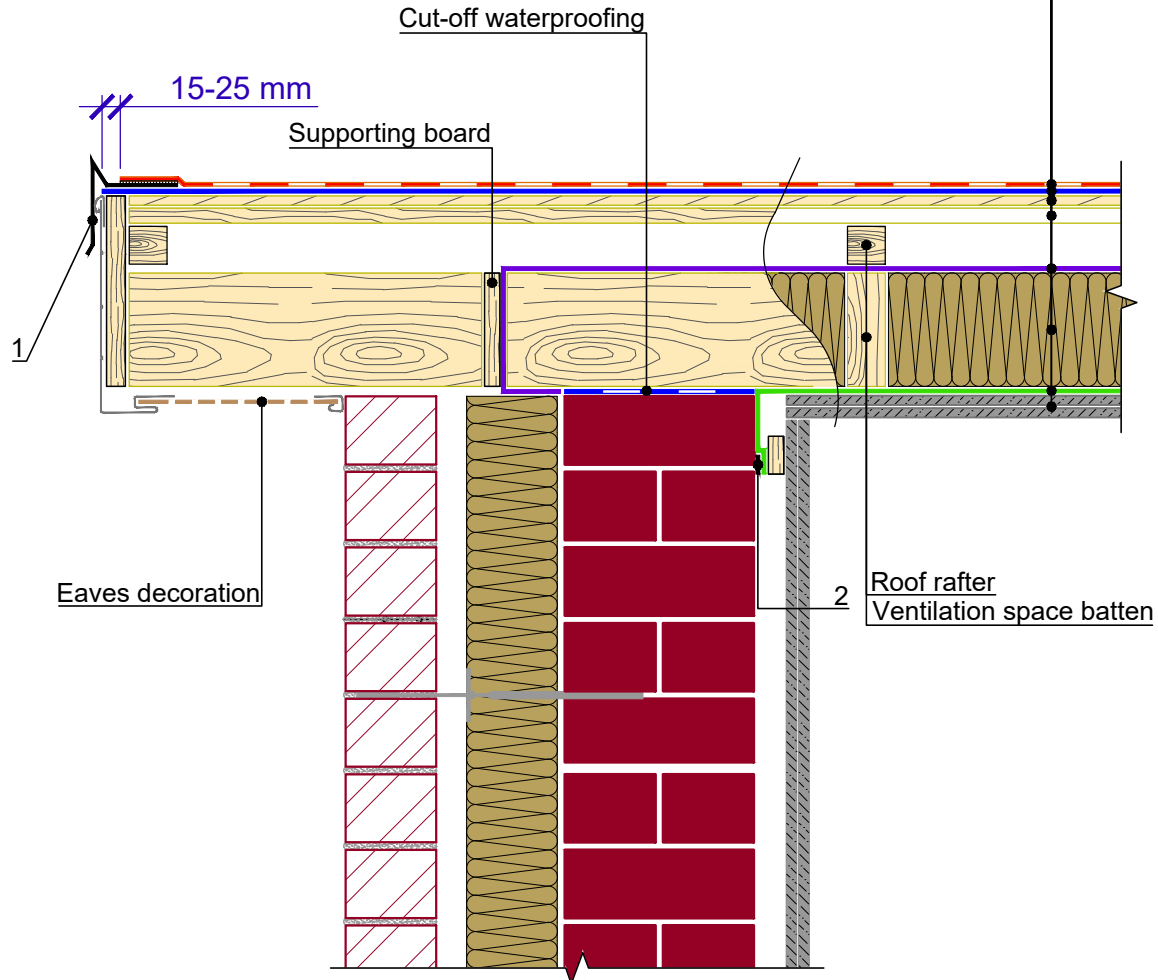


Specification of detail DWG No. 2.1 - 2021.11

Position	Name	Consumption per one linear meter	Unit	Note																		
1	Metal flashing	0.5	pcs.	length 2 m																		
<table border="1" style="width: 100%; border-collapse: collapse;"> <tr> <td colspan="4"></td> <td>DESIGN</td> <td>APPROVED</td> </tr> <tr> <td colspan="4"></td> <td>SCALE</td> <td>DATE</td> </tr> <tr> <td>REV.</td> <td>DATE</td> <td>DESCRIPTION</td> <td>CHECKED</td> <td>DWG No. 2.1 - 2021.11</td> <td>REV.</td> </tr> </table>									DESIGN	APPROVED					SCALE	DATE	REV.	DATE	DESCRIPTION	CHECKED	DWG No. 2.1 - 2021.11	REV.
				DESIGN	APPROVED																	
				SCALE	DATE																	
REV.	DATE	DESCRIPTION	CHECKED	DWG No. 2.1 - 2021.11	REV.																	
TN_SHINGLES_MANSARD_EN																						
Gable. Junction of the roof to the facade system TN-Facade Eco.																						



TECHNONICOL roofing shingles
 Underlayment membrane of UNDERLAY series
 Solid base (OSB-3 or plywood)
 Counter-batten
 Diffusion membrane TECHNOMICOL ALPHA
 Stone wool slabs TECHNOLITE EXTRA
 Vapor barrier film TECHNOMICOL ALPHA
 Gypsum board 12.5 mm in two layers



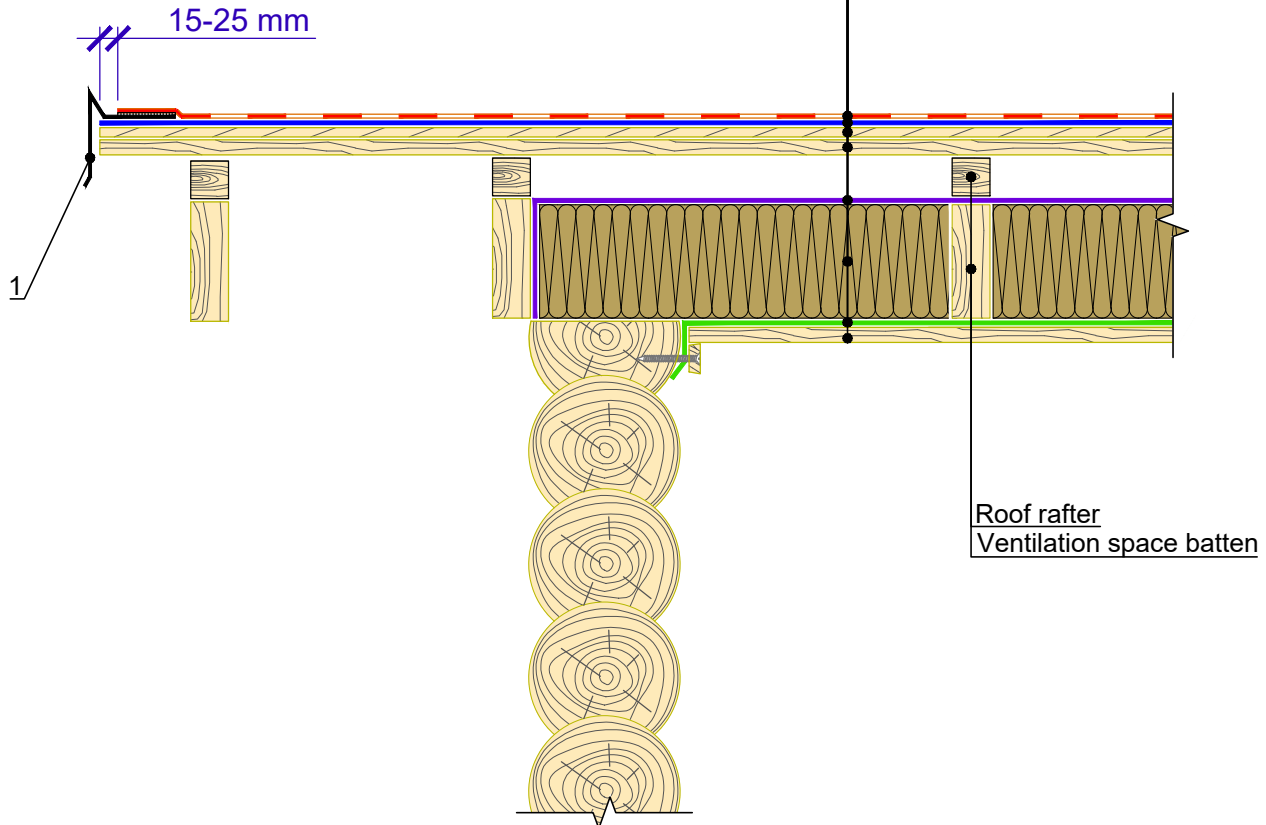
Specification of detail DWG No. 2.2 - 2021.11

Position	Name	Consumption per one linear meter	Unit	Note
1	Metal flashing	0.5	pcs.	length 2 m
2	Adhesive tape	upon the project	m	

				TN_SHINGLES_MANSARD_EN	DESIGN	APPROVED
				Gable. Junction of the roof to the facade system TN-Facade Standard.	SCALE	DATE
REV.	DATE	DESCRIPTION	CHECKED		DWG No. 2.2 - 2021.11	REV.

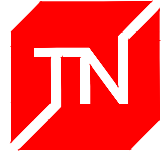


TECHNONICOL roofing shingles
 Underlayment membrane of UNDERLAY series
 Solid base (OSB-3 or plywood)
 Counter-batten
 Diffusion membrane TECHNOMICOL ALPHA
 Stone wool slabs TECHNOLITE EXTRA
 Vapor barrier film TECHNOMICOL ALPHA
 Ceiling cladding

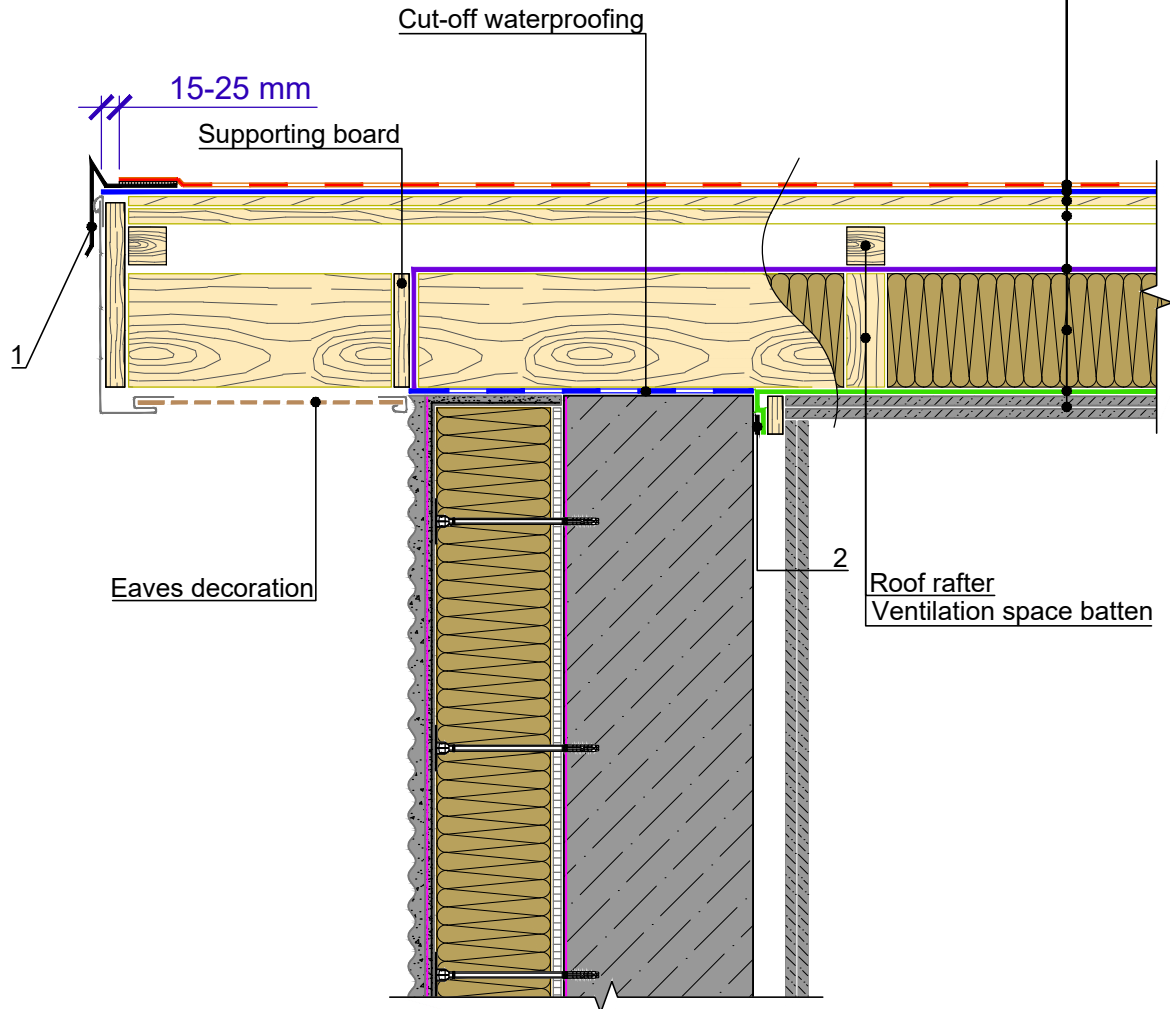


Specification of detail DWG No. 2.3 - 2021.11

Position	Name	Consumption per one linear meter	Unit	Note
1	Metal flashing	0.5	pcs.	length 2 m
TN_SHINGLES_MANSARD_EN				
			DESIGN	APPROVED
			SCALE	DATE
REV.	DATE	DESCRIPTION	CHECKED	DWG No. 2.3 - 2021.11
Gable. Junction of the roof to the log wall.				REV.

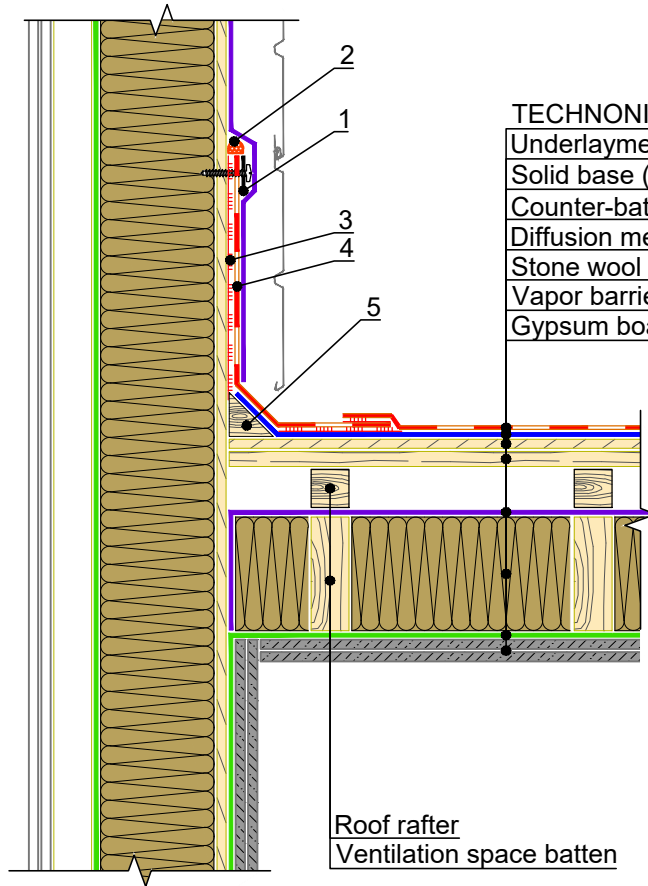
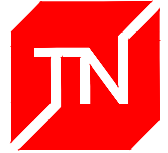


TECHNONICOL roofing shingles
Underlayment membrane of UNDERLAY series
Solid base (OSB-3 or plywood)
Counter-batten
Diffusion membrane TECHNOMICOL ALPHA
Stone wool slabs TECHNOLITE EXTRA
Vapor barrier film TECHNOMICOL ALPHA
Gypsum board 12.5 mm in two layers



Specification of detail DWG No. 2.4 - 2021.11

Position	Name	Consumption per one linear meter	Unit	Note	
1	Metal flashing	0.5	pcs.	length 2 m	
2	Adhesive tape	upon the project	m		
TN_SHINGLES_MANSARD_EN				DESIGN	APPROVED
Gable. Junction of the roof to the facade system TN-Facade Decor.				SCALE	DATE
				DWG No. 2.4 - 2021.11	REV.
REV.	DATE	DESCRIPTION	CHECKED		



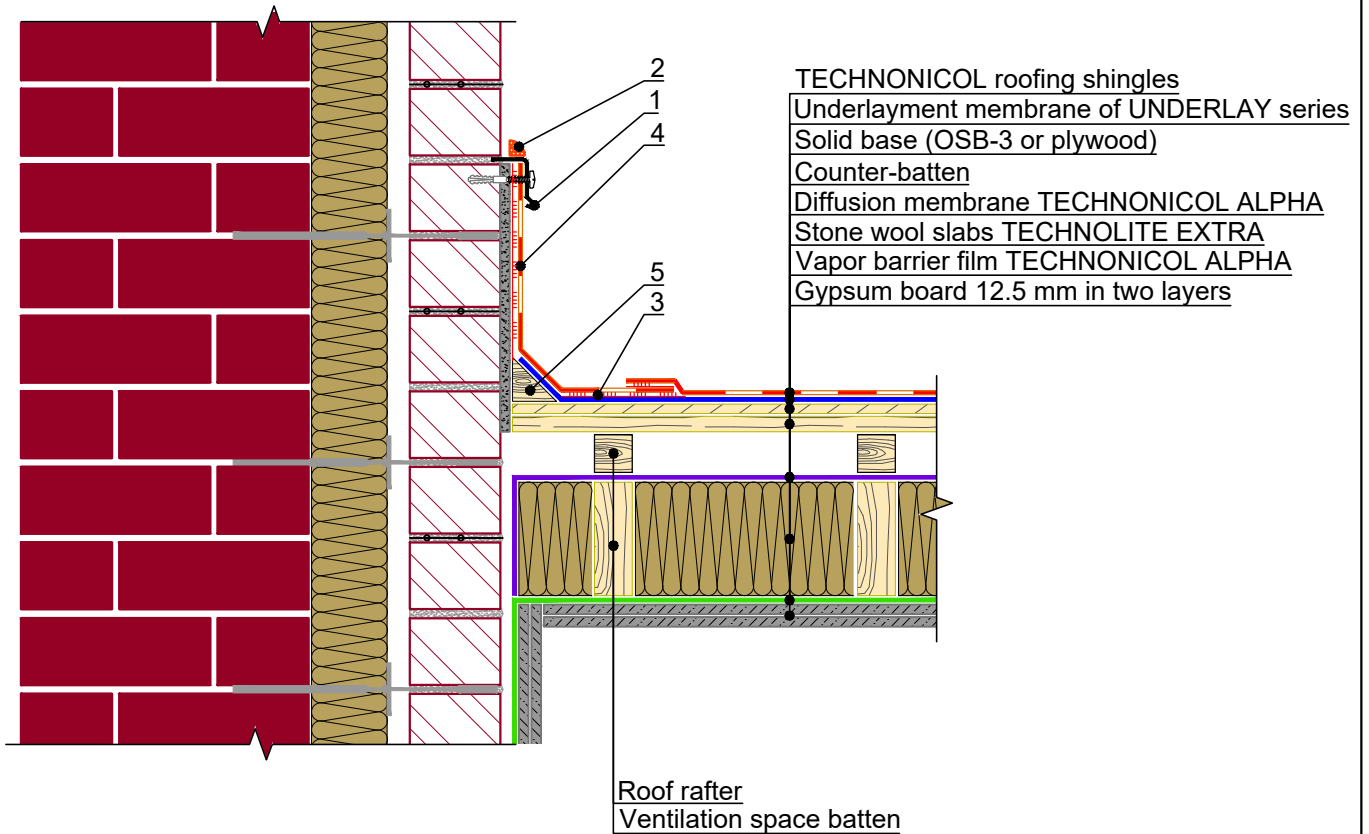
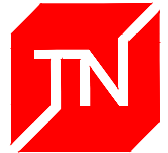
- TECHNOMICOL roofing shingles
- Underlayment membrane of UNDERLAY series
- Solid base (OSB-3 or plywood)
- Counter-batten
- Diffusion membrane TECHNOMICOL ALPHA
- Stone wool slabs TECHNOLITE EXTRA
- Vapor barrier film TECHNOMICOL ALPHA
- Gypsum board 12.5 mm in two layers

Roof rafter
Ventilation space batten

Specification of detail DWG No. 3.1 - 2021.11

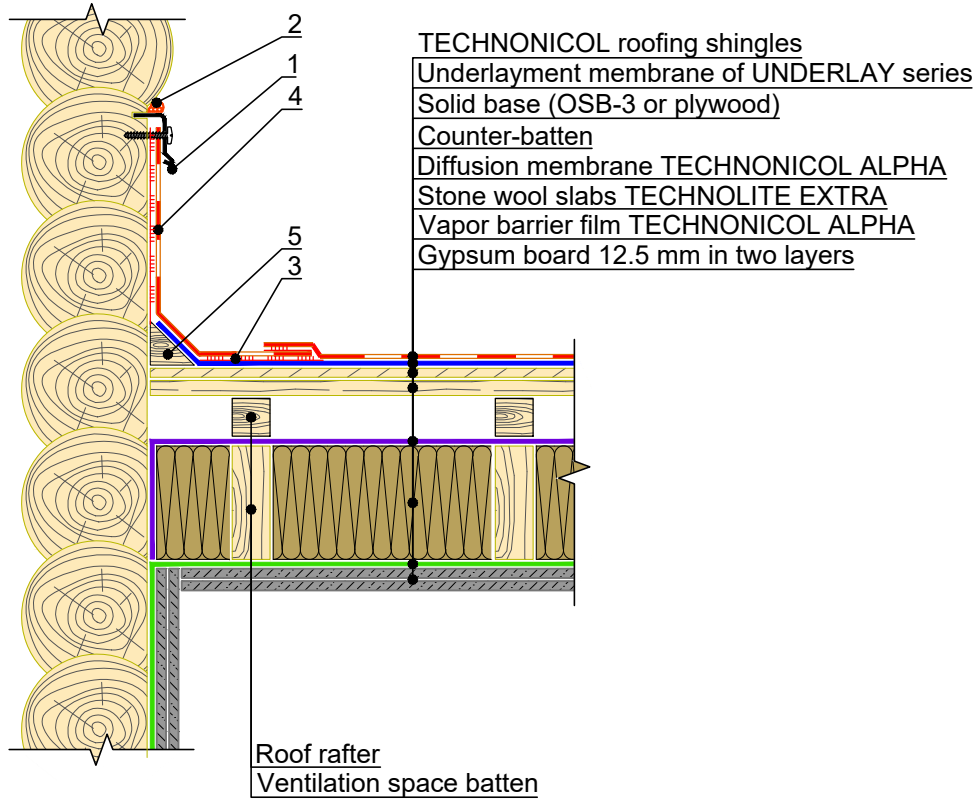
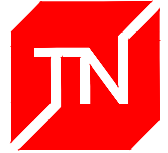
Position	Name	Consumption per one linear meter	Unit	Note	
1	Metal flashing	0.5	pcs.	length 2 m	
2	Polyurethane sealant	0.15	kg		
3	Mastic TECHNOMICOL FIXER	0.75	kg		
4	Valley roll material	0.5	m ²		
5	Wood skirting	upon the project	pcs.		
			DESIGN	APPROVED	
			SCALE	DATE	
REV.	DATE	DESCRIPTION	CHECKED	DWG No. 3.1 - 2021.11	REV.

Side abutment to the wall.
Junction of the facade system TN-Facade Eco.



Specification of detail DWG No. 3.2 - 2021.11

Position	Name	Consumption per one linear meter	Unit	Note	
1	Metal flashing	0.5	pcs.	length 2 m	
2	Polyurethane sealant	0.15	kg		
3	Mastic TECHNOMICOL FIXER	0.75	kg		
4	Valley roll material	0.5	m ²		
5	Wood skirting	upon the project	pcs.		
TN_SHINGLES_MANSARD_EN				DESIGN	APPROVED
Side abutment to the wall. Junction of the facade system TN-Facade Standard.				SCALE	DATE
				DWG No. 3.2 - 2021.11	REV.
REV.	DATE	DESCRIPTION	CHECKED		

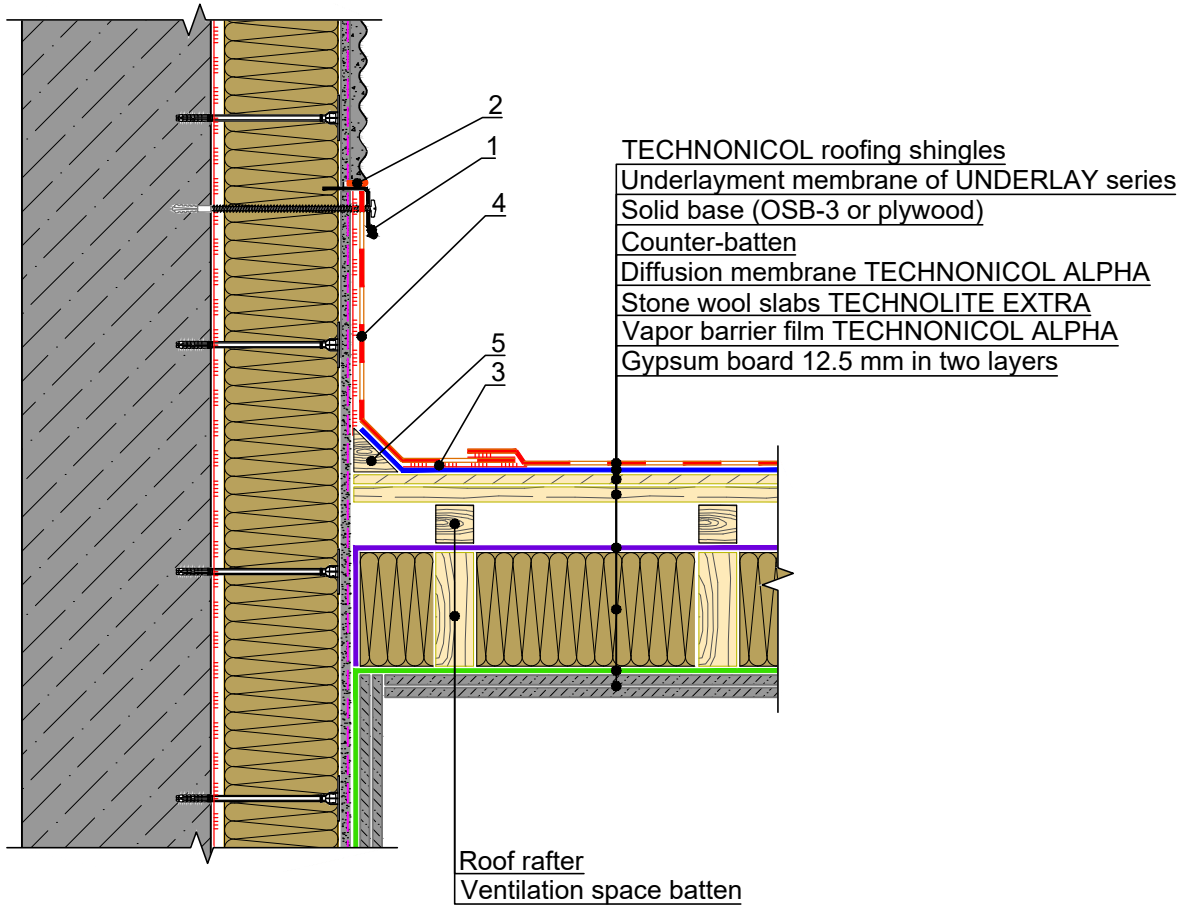


Specification of detail DWG No. 3.3 - 2021.11

Position	Name	Consumption per one linear meter	Unit	Note	
1	Metal flashing	0.5	pcs.	length 2 m	
2	Polyurethane sealant	0.15	kg		
3	Mastic TECHNOMICOL FIXER	0.75	kg		
4	Valley roll material	0.5	m ²		
5	Wood skirting	upon the project	pcs.		
			DESIGN	APPROVED	
			SCALE	DATE	
REV.	DATE	DESCRIPTION	CHECKED	DWG No. 3.3 - 2021.11	REV.

TN_SHINGLES_MANSARD_EN

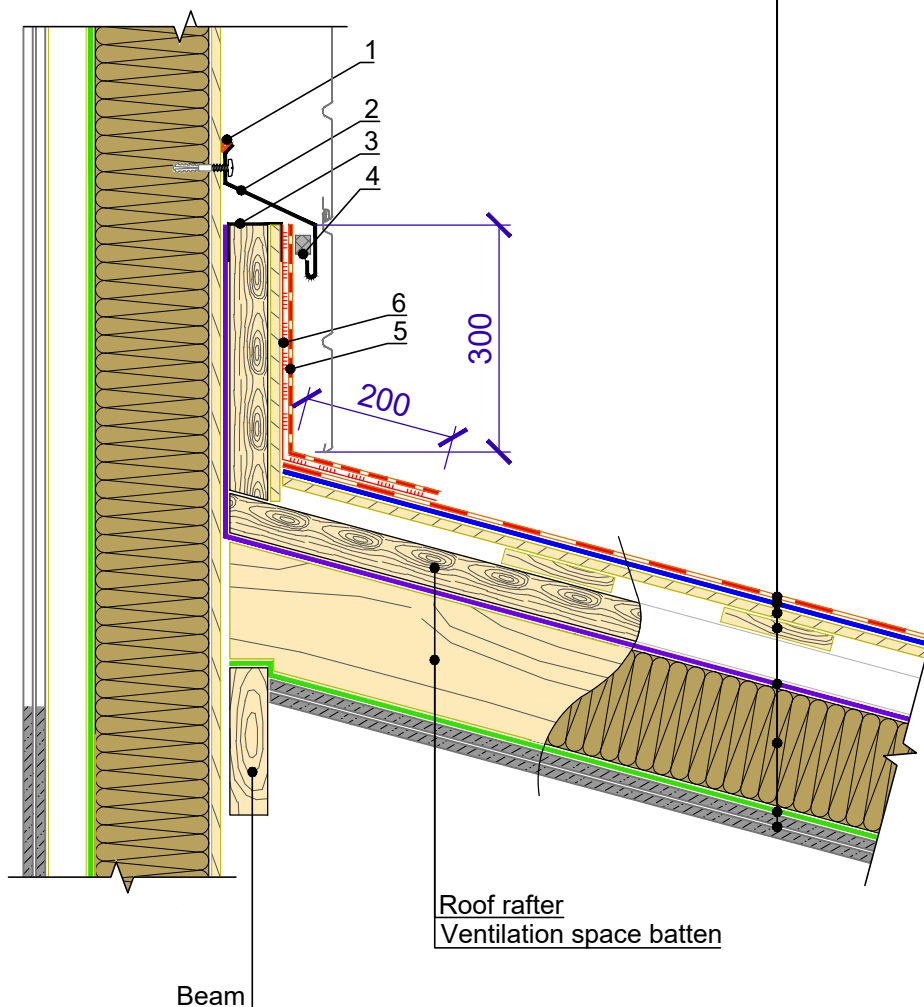
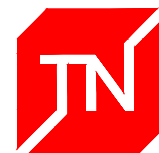
Side abutment to the wall.
Junction of the roof to the log wall.



Specification of detail DWG No. 3.4 - 2021.11

Position	Name	Consumption per one linear meter	Unit	Note	
1	Metal flashing	0.5	pcs.	length 2 m	
2	Polyurethane sealant	0.15	kg		
3	Mastic TECHNOMICOL FIXER	0.75	kg		
4	Valley roll material	0.5	m ²		
5	Wood skirting	upon the project	pcs.		
TN_SHINGLES_MANSARD_EN				DESIGN	APPROVED
Side abutment to the wall. Junction of the facade system TN-Facade Decor.				SCALE	DATE
				DWG No. 3.4 - 2021.11	REV.
REV.	DATE	DESCRIPTION	CHECKED		

TECHNONICOL roofing shingles
Underlayment membrane of UNDERLAY series
Solid base (OSB-3 or plywood)
Counter-batten
Diffusion membrane TECHNONICOL ALPHA
Stone wool slabs TECHNOLITE EXTRA
Vapor barrier film TECHNONICOL ALPHA
Gypsum board 12.5 mm in two layers



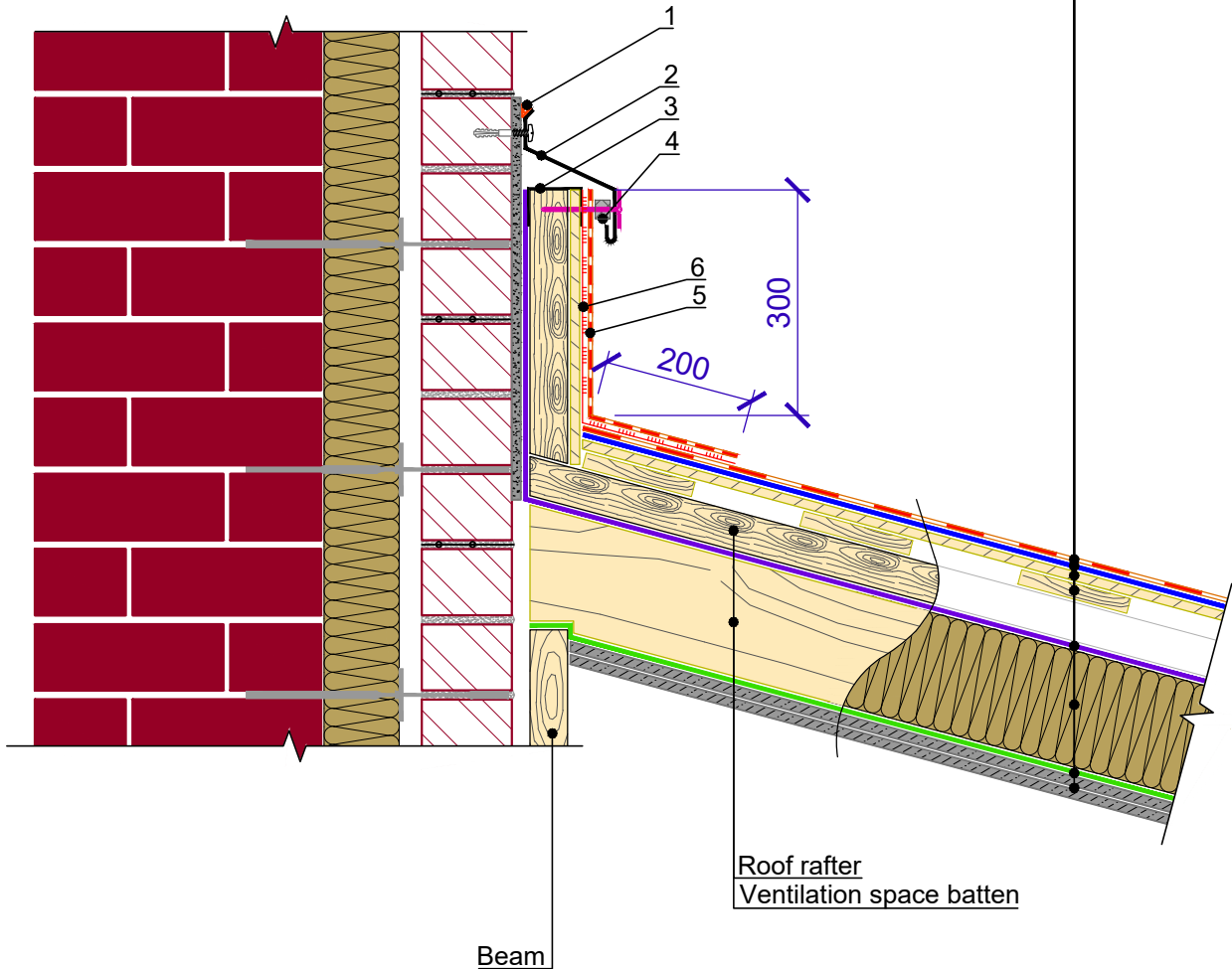
Specification of detail DWG No. 4.1 - 2021.11

Position	Name	Consumption per one linear meter	Unit	Note
1	Polyurethane sealant	0.15	kg	
2	Metal flashing	0.5	pcs.	length 2 m
3	Mosquito net	upon the project	pcs.	
4	Spacer	upon the project	pcs.	
5	Valley roll material	0.5	m ²	
6	Mastic TECHNONICOL FIXER	0.75	kg	

				TN_SHINGLES_MANSARD_EN		DESIGN	APPROVED
				End abutment to the wall. Junction of the facade system TN-Facade Standard.		SCALE	DATE
REV.	DATE	DESCRIPTION	CHECKED			DWG No. 4.1 - 2021.11	REV.

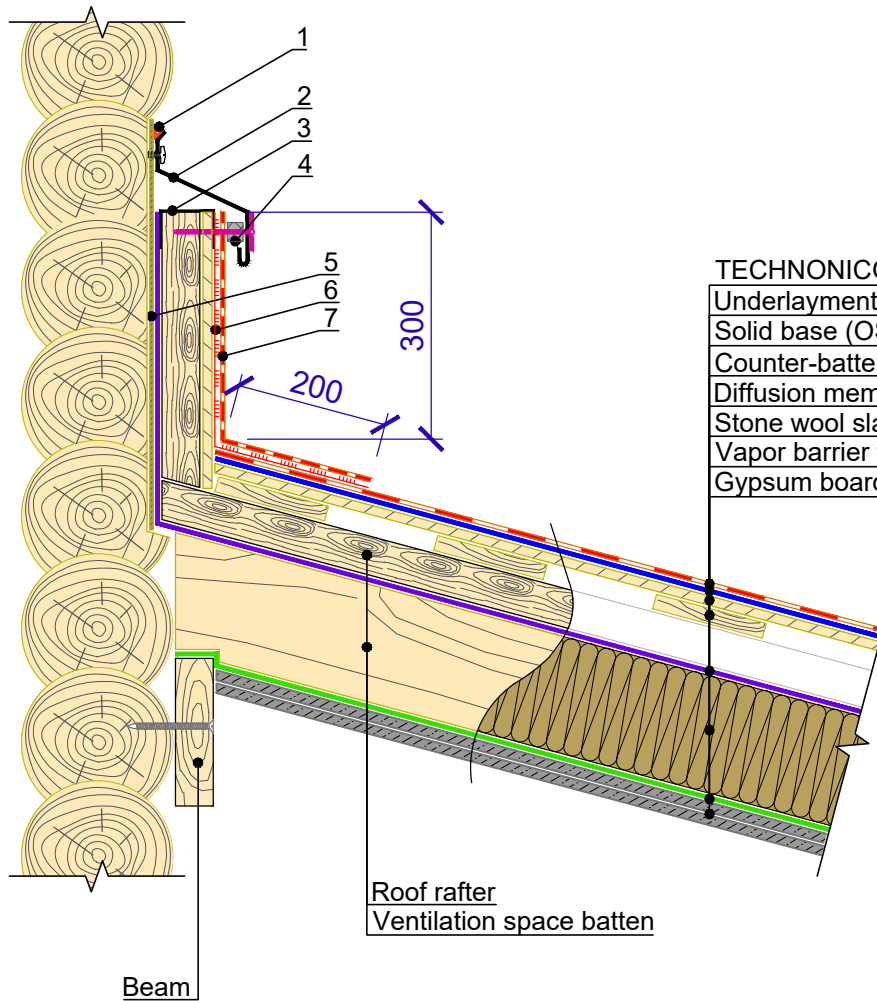


TECHNONICOL roofing shingles
Underlayment membrane of UNDERLAY series
Solid base (OSB-3 or plywood)
Counter-batten
Diffusion membrane TECHNOMICOL ALPHA
Stone wool slabs TECHNOLITE EXTRA
Vapor barrier film TECHNOMICOL ALPHA
Gypsum board 12.5 mm in two layers



Specification of detail DWG No. 4.2 - 2021.11

Position	Name	Consumption per one linear meter	Unit	Note	
1	Polyurethane sealant	0.15	kg		
2	Metal flashing	0.5	pcs.	length 2 m	
3	Mosquito net	upon the project	pcs.		
4	Spacer	upon the project	pcs.		
5	Valley roll material	0.5	m ²		
6	Mastic TECHNOMICOL FIXER	0.75	kg		
TN_SHINGLES_MANSARD_EN				DESIGN	APPROVED
End abutment to the wall. Junction of the facade system TN-Facade Standard.				SCALE	DATE
				DWG No. 4.2 - 2021.11	REV.
REV.	DATE	DESCRIPTION	CHECKED		

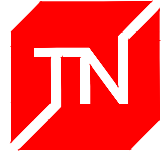


- TECHNONICOL roofing shingles
- Underlayment membrane of UNDERLAY series
- Solid base (OSB-3 or plywood)
- Counter-batten
- Diffusion membrane TECHNONICOL ALPHA
- Stone wool slabs TECHNOLITE EXTRA
- Vapor barrier film TECHNONICOL ALPHA
- Gypsum board 12.5 mm in two layers

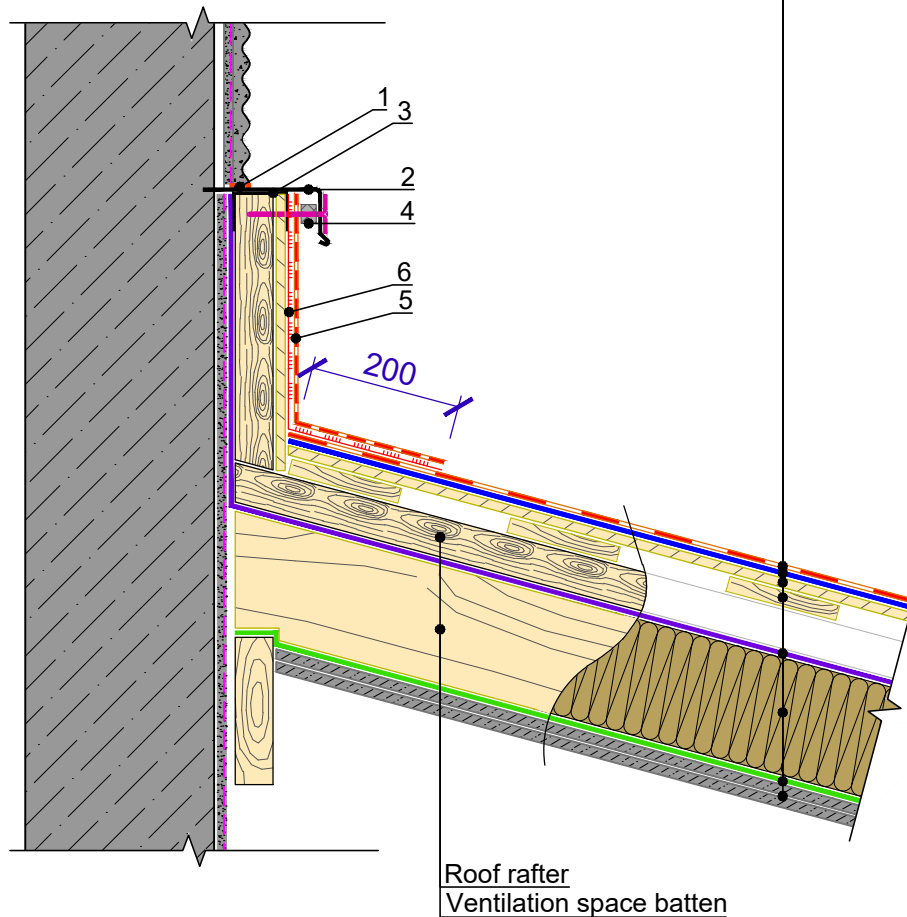
Specification of detail DWG No. 4.3 - 2021.11

Position	Name	Consumption per one linear meter	Unit	Note
1	Polyurethane sealant	0.15	kg	
2	Metal flashing	0.5	pcs.	length 2 m
3	Mosquito net	upon the project	pcs.	
4	Spacer	upon the project	pcs.	
5	Plywood	0.5	m ²	
6	Mastic TECHNONICOL FIXER	0.75	kg	
7	Valley roll material	0.5	m ²	

				TN_SHINGLES_MANSARD_EN		DESIGN	APPROVED
				End abutment to the wall. Junction of the roof to the log wall.		SCALE	DATE
REV.	DATE	DESCRIPTION	CHECKED			DWG No. 4.3 - 2021.11	REV.



TECHNONICOL roofing shingles
Underlayment membrane of UNDERLAY series
Solid base (OSB-3 or plywood)
Counter-batten
Diffusion membrane TECHNOMICOL ALPHA
Stone wool slabs TECHNOLITE EXTRA
Vapor barrier film TECHNOMICOL ALPHA
Gypsum board 12.5 mm in two layers

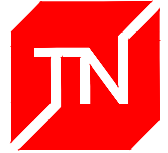


Roof rafter
Ventilation space batten

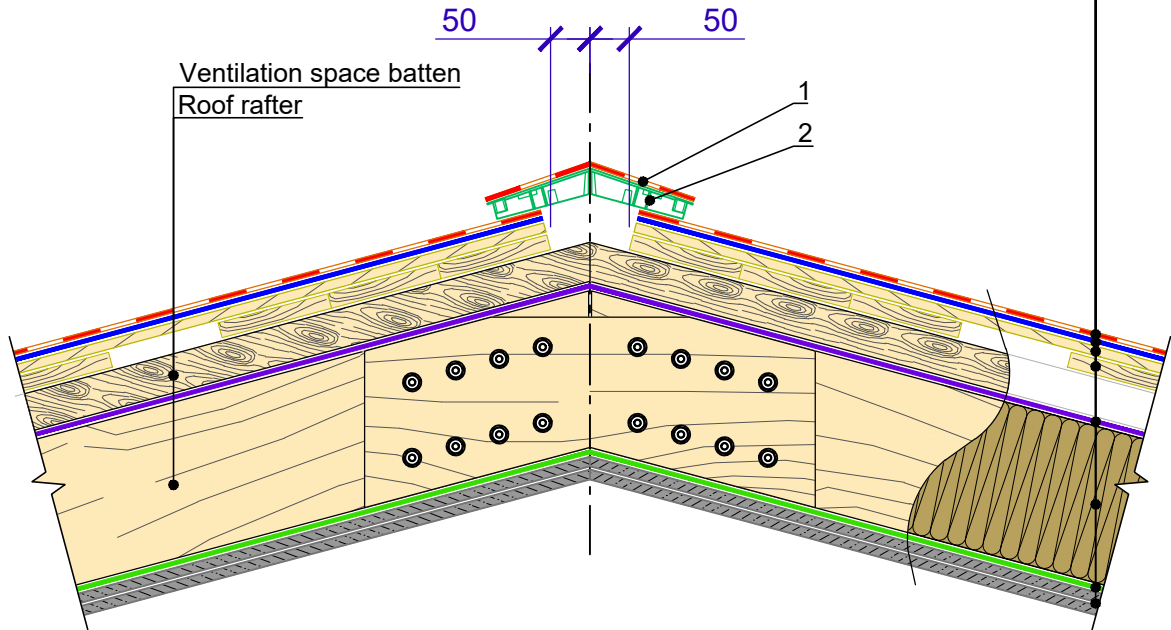
Specification of detail DWG No. 4.4 - 2021.11

Position	Name	Consumption per one linear meter	Unit	Note
1	Polyurethane sealant	0.15	kg	
2	Metal flashing	0.5	pcs.	length 2 m
3	Mosquito net	upon the project	pcs.	
4	Spacer	upon the project	pcs.	
5	Valley roll material	0.5	m ²	
6	Mastic TECHNOMICOL FIXER	0.75	kg	

				TN_SHINGLES_MANSARD_EN		DESIGN	APPROVED
				End abutment to the wall. Junction of the facade system TN-Facade Decor.		SCALE	DATE
REV.	DATE	DESCRIPTION	CHECKED			DWG No. 4.4 - 2021.11	REV.

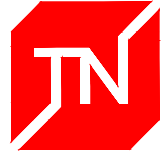


TECHNONICOL roofing shingles
Underlayment membrane of UNDERLAY series
Solid base (OSB-3 or plywood)
Counter-batten
Diffusion membrane TECHNOMICOL ALPHA
Stone wool slabs TECHNOLITE EXTRA
Vapor barrier film TECHNOMICOL ALPHA
Gypsum board 12.5 mm in two layers

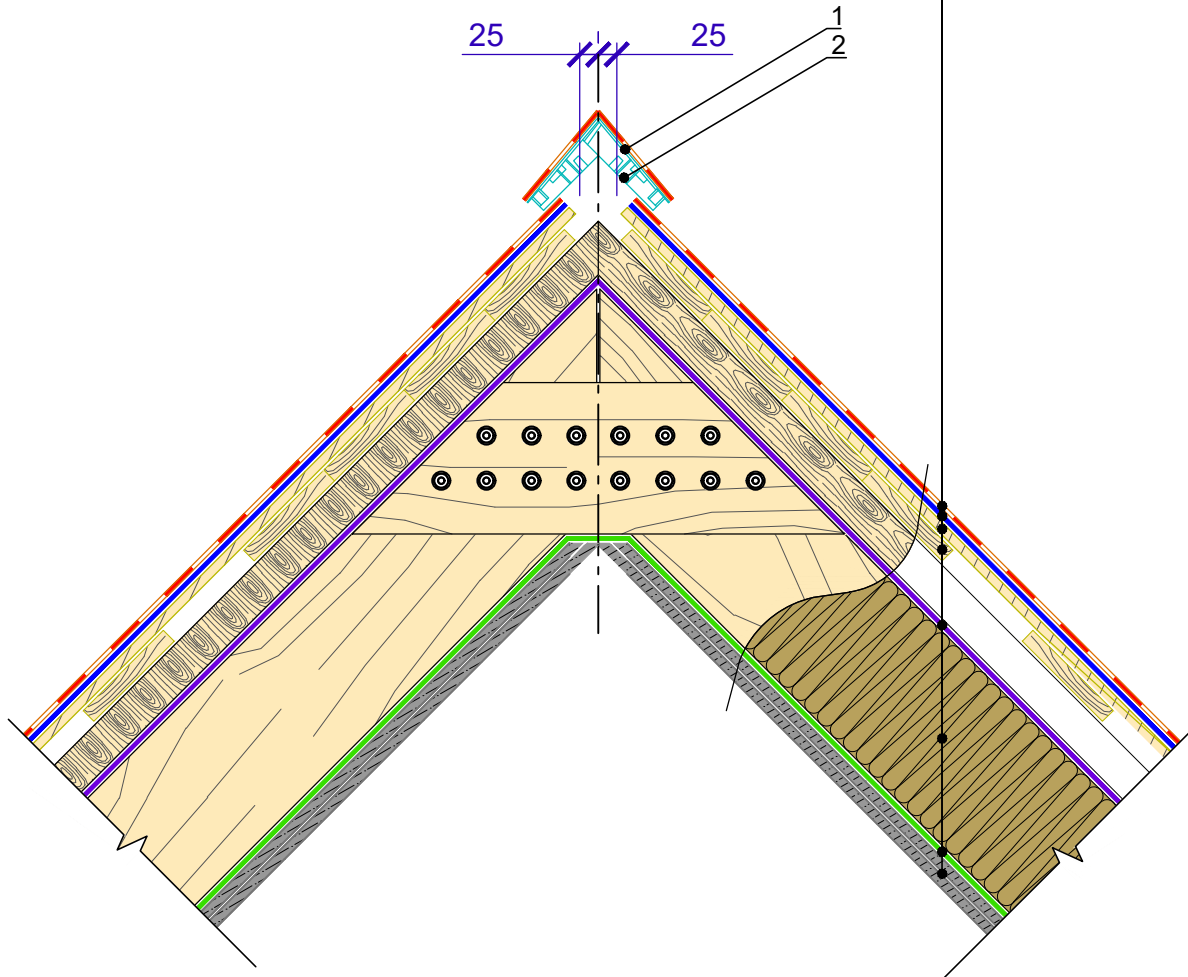


Specification of detail DWG No. 5.1 - 2021.11

Position	Name	Consumption per one linear meter	Unit	Note	
1	Hip&ridge shingles	0.25	m ²		
2	Ridge vent	1.7	pcs.	length 0.61 m	
TN_SHINGLES_MANSARD_EN				DESIGN	APPROVED
TECHNONICOL prefabricated ventilation ridge profile. The roof slope from 12 to 18 degrees.				SCALE	DATE
REV.	DATE	DESCRIPTION	CHECKED	DWG No. 5.1 - 2021.11	REV.

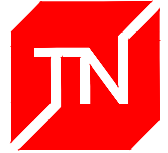


TECHNONICOL roofing shingles
 Underlayment membrane of UNDERLAY series
 Solid base (OSB-3 or plywood)
 Counter-batten
 Diffusion membrane TECHNOMICOL ALPHA
 Stone wool slabs TECHNOLITE EXTRA
 Vapor barrier film TECHNOMICOL ALPHA
 Gypsum board 12.5 mm in two layers

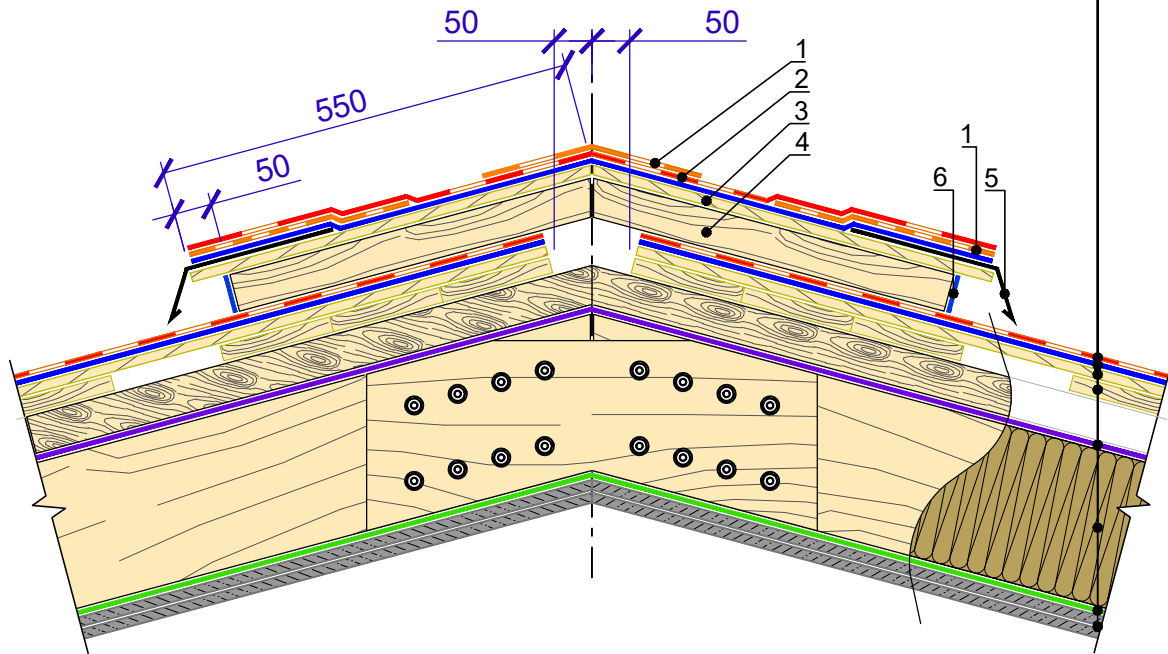


Specification of detail DWG No. 5.2 - 2021.11

Position	Name	Consumption per one linear meter	Unit	Note	
1	Hip&ridge shingles	0.25	m ²		
2	Ridge vent	1.7	pcs.	length 0.61 m	
TN_SHINGLES_MANSARD_EN				DESIGN	APPROVED
TECHNONICOL prefabricated ventilation ridge profile. The roof slope more than 18 degrees.				SCALE	DATE
REV.	DATE	DESCRIPTION	CHECKED	DWG No. 5.2 - 2021.11	REV.



TECHNONICOL roofing shingles
Underlayment membrane of UNDERLAY series
Solid base (OSB-3 or plywood)
Counter-batten
Diffusion membrane TECHNOMICOL ALPHA
Stone wool slabs TECHNOLITE EXTRA
Vapor barrier film TECHNOMICOL ALPHA
Gypsum board 12.5 mm in two layers

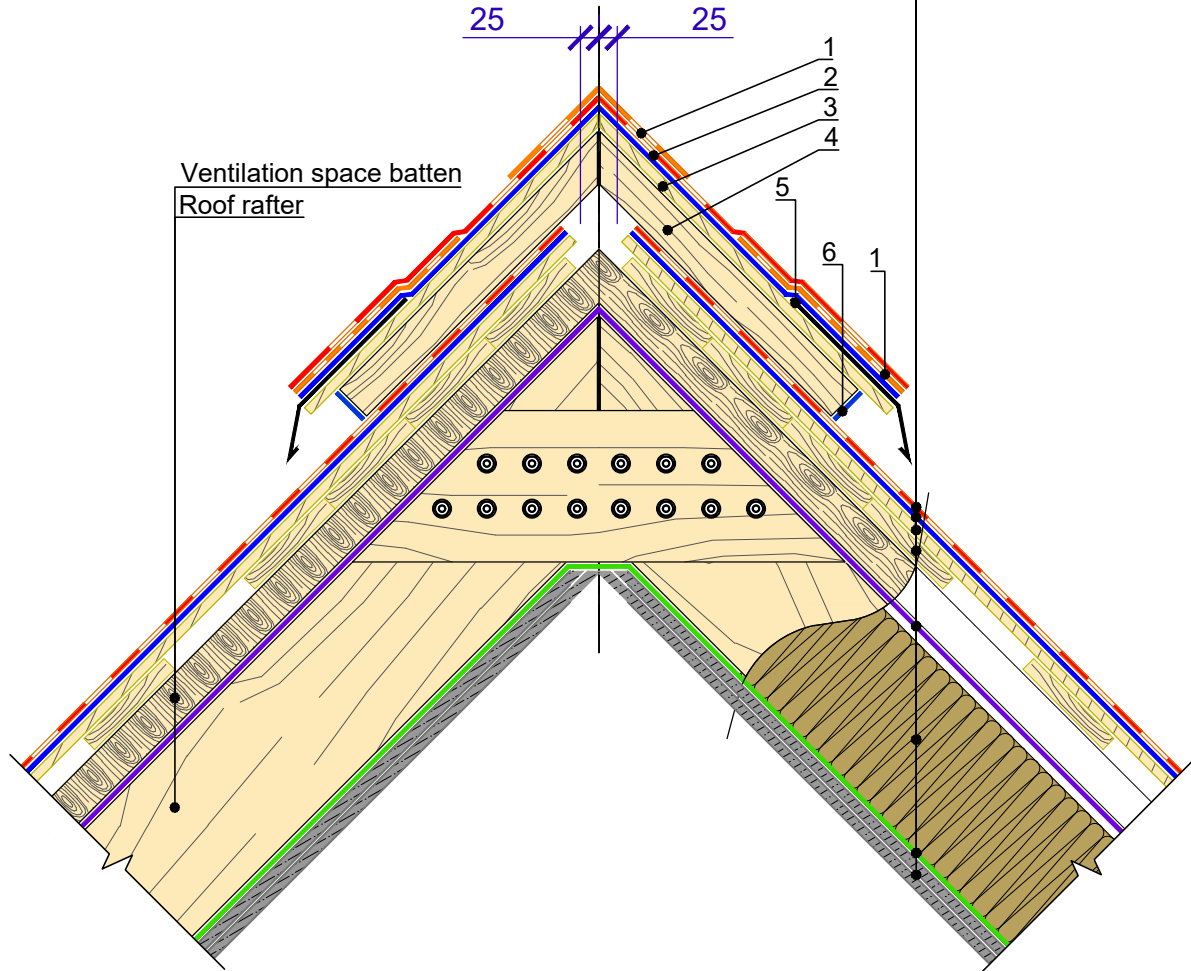


Specification of detail DWG No. 5.3 - 2021.11

Position	Name	Consumption per one linear meter	Unit	Note	
1	Hip&ridge shingles	0.25	m ²		
2	TECHNONICOL roofing shingles	upon the project	pcs.		
3	Solid base (OSB-3 or plywood)	1.1	m ²		
4	Beam 50x50	upon the project	pcs.	length 0.5 m	
5	Drip trim	0.5	pcs.	length 2 m	
6	Mosquito net	0.2	pcs.	length 5 m	
TN_SHINGLES_MANSARD_EN				DESIGN	APPROVED
Ventilation ridge. The roof slope from 12 to 18 degrees.				SCALE	DATE
				DWG No. 5.3 - 2021.11	REV.
REV.	DATE	DESCRIPTION	CHECKED		



TECHNONICOL roofing shingles
Underlayment membrane of UNDERLAY series
Solid base (OSB-3 or plywood)
Counter-batten
Diffusion membrane TECHNOMICOL ALPHA
Stone wool slabs TECHNOLITE EXTRA
Vapor barrier film TECHNOMICOL ALPHA
Gypsum board 12.5 mm in two layers



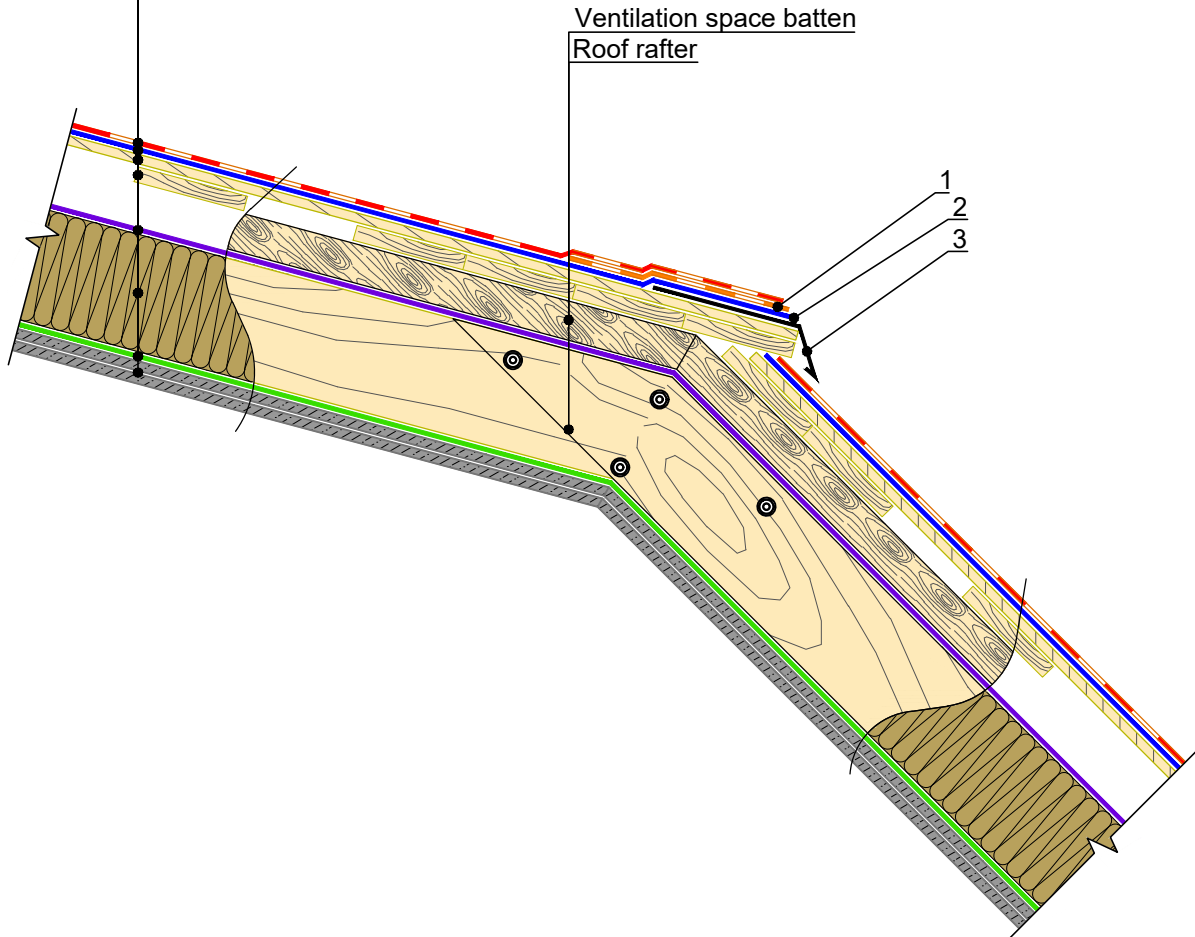
Specification of detail DWG No. 5.4 - 2021.11

Position	Name	Consumption per one linear meter	Unit	Note	
1	Hip&ridge shingles	0.25	m ²		
2	TECHNONICOL roofing shingles	upon the project	pcs.		
3	Solid base (OSB-3 or plywood)	1.1	m ²		
4	Beam 50x50	upon the project	pcs.	length 0.5 m	
5	Drip trim	0.5	pcs.	length 2 m	
6	Mosquito net	0.2	pcs.	length 5 m	
			DESIGN	APPROVED	
			SCALE	DATE	
REV.	DATE	DESCRIPTION	CHECKED	DWG No. 5.4 - 2021.11	REV.

Ventilation ridge. The roof slope more than 18 degrees.



TECHNONICOL roofing shingles
Underlayment membrane of UNDERLAY series
Solid base (OSB-3 or plywood)
Counter-batten
Diffusion membrane TECHNOLITE ALPHA
Stone wool slabs TECHNOLITE EXTRA
Vapor barrier film TECHNOLITE ALPHA
Gypsum board 12.5 mm in two layers



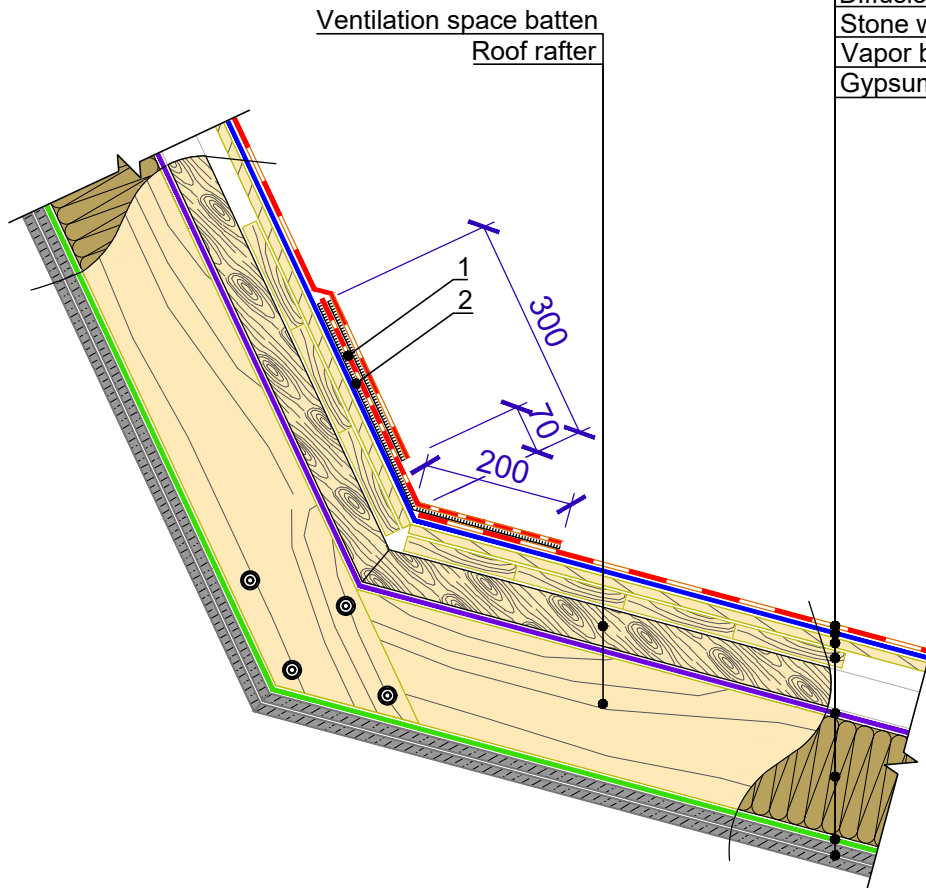
Specification of detail DWG No. 6.1 - 2021.11

Position	Name	Consumption per one linear meter	Unit	Note
1	Hip&ridge shingles	0.25	m ²	
2	Underlayment membrane of UNDERLAY series	1	m ²	
3	Drip trim	0.5	pcs.	length 2 m

				TN_SHINGLES_MANSARD_EN	DESIGN	APPROVED
				External roof bend	SCALE	DATE
REV.	DATE	DESCRIPTION	CHECKED		DWG No. 6.1 - 2021.11	REV.



TECHNONICOL roofing shingles
Underlayment membrane of UNDERLAY series
Solid base (OSB-3 or plywood)
Counter-batten
Diffusion membrane TECHNOMICOL ALPHA
Stone wool slabs TECHNOLITE EXTRA
Vapor barrier film TECHNOMICOL ALPHA
Gypsum board 12.5 mm in two layers



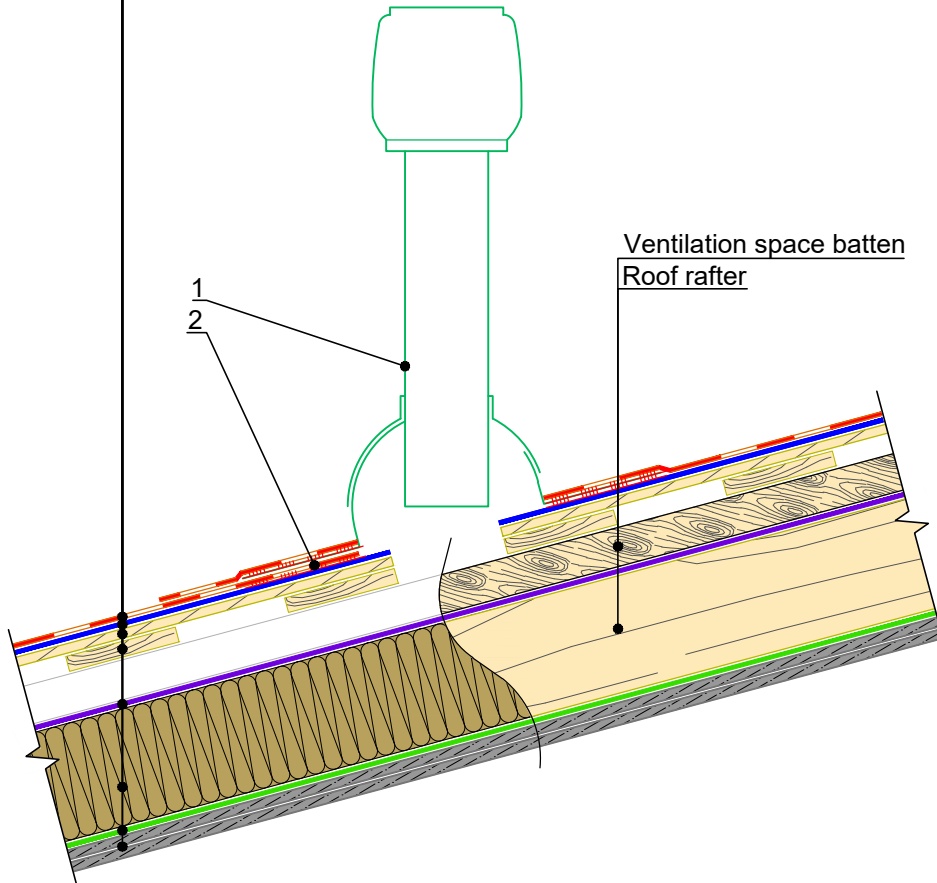
Specification of detail DWG No. 6.2 - 2021.11

Position	Name	Consumption per one linear meter	Unit	Note
1	Valley roll material	0.5	m ²	
2	Mastic TECHNOMICOL FIXER	0.75	kg	

				TN_SHINGLES_MANSARD_EN	DESIGN	APPROVED
				Internal roof bend	SCALE	DATE
REV.	DATE	DESCRIPTION	CHECKED		DWG No. 6.2 - 2021.11	REV.



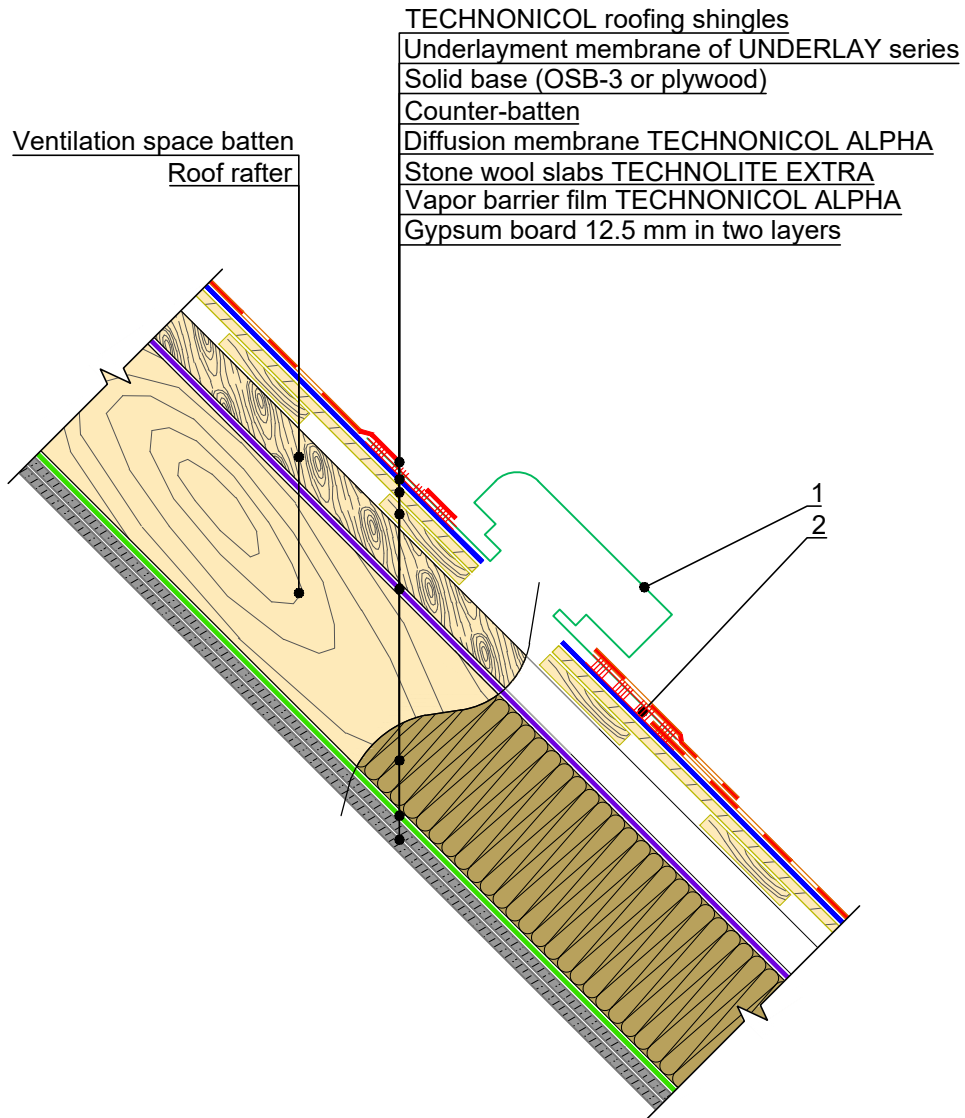
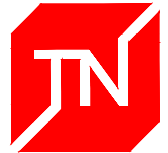
TECHNOMICOL roofing shingles
 Underlayment membrane of UNDERLAY series
 Solid base (OSB-3 or plywood)
 Counter-batten
 Diffusion membrane TECHNOMICOL ALPHA
 Stone wool slabs TECHNOLITE EXTRA
 Vapor barrier film TECHNOMICOL ALPHA
 Gypsum board 12.5 mm in two layers



Specification of detail DWG No. 7.1 - 2021.11

Position	Name	Consumption	Unit	Note
1	Ventilation component PILOT	1	pcs.	
2	Mastic TECHNOMICOL FIXER	0.75	kg	

				TN_SHINGLES_MANSARD_EN	DESIGN	APPROVED
				TECHNOMICOL PILOT roof aerator	SCALE	DATE
REV.	DATE	DESCRIPTION	CHECKED		DWG No. 7.1 - 2021.11	REV.



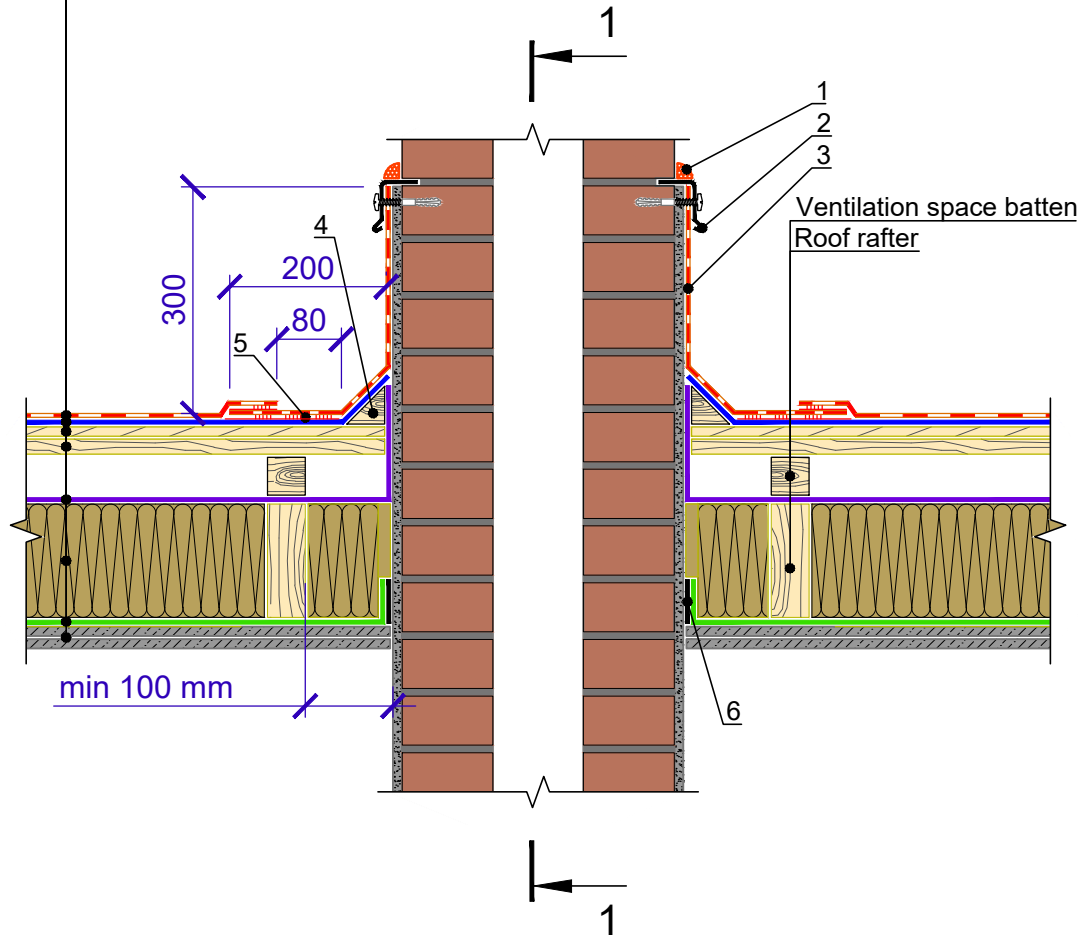
Specification of detail DWG No. 7.2 - 2021.11

Position	Name	Consumption	Unit	Note
1	Ventilation component KTV	1	pcs.	
2	Mastic TECHNONICOL FIXER	0.75	kg	

				TN_SHINGLES_MANSARD_EN	DESIGN	APPROVED
				TECHNONICOL KTV roof vent	SCALE	DATE
REV.	DATE	DESCRIPTION	CHECKED		DWG No. 7.2 - 2021.11	REV.



TECHNONICOL roofing shingles
Underlayment membrane of UNDERLAY series
Solid base (OSB-3 or plywood)
Counter-batten
Diffusion membrane TECHNOMICOL ALPHA
Stone wool slabs TECHNOLITE EXTRA
Vapor barrier film TECHNOMICOL ALPHA
Gypsum board 12.5 mm in two layers

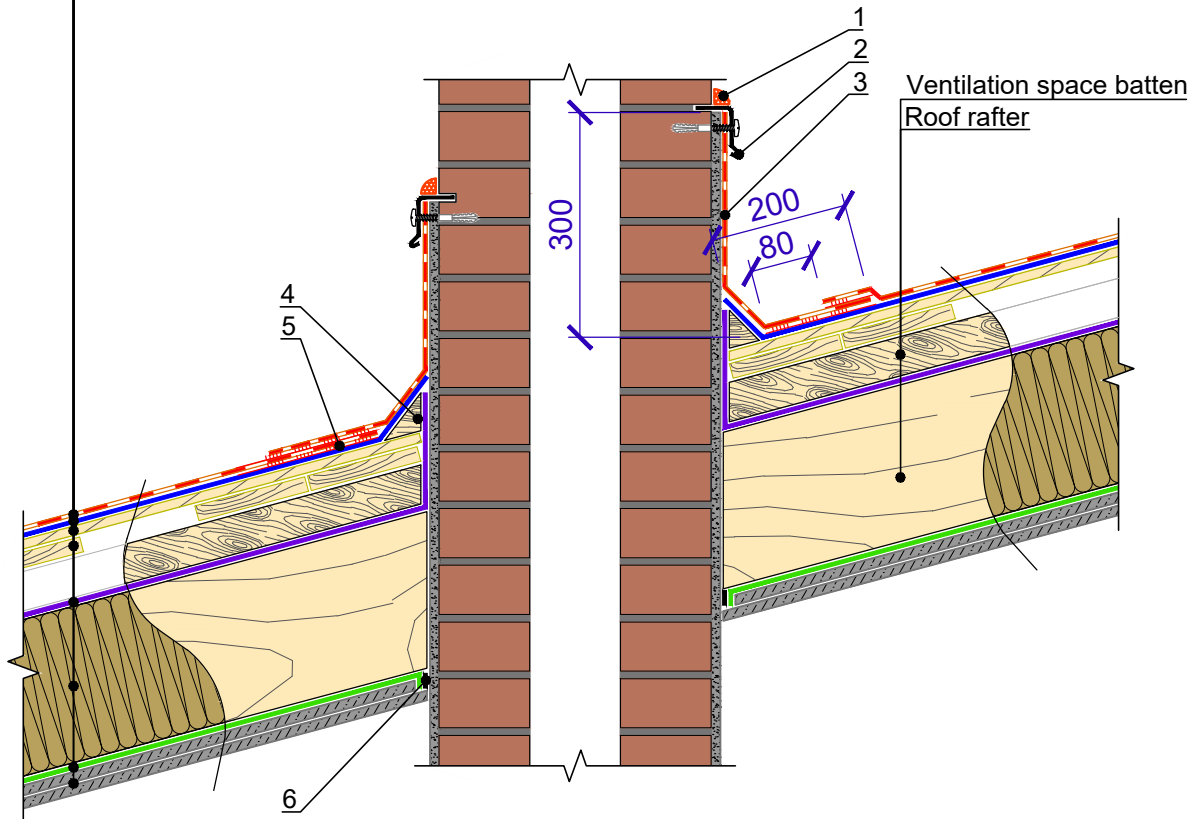


Specification of detail DWG No. 8.1 - 2021.11

Position	Name	Consumption	Unit	Note	
1	Polyurethane sealant	0.15	kg		
2	Metal flashing	0.5	pcs.	length 2 m	
3	Valley roll material	0.5	m ²		
4	Wood skirting	upon the project	pcs.		
5	Mastic TECHNOMICOL FIXER	0.75	kg		
6	Adhesive tape	upon the project	m		
TN_SHINGLES_MANSARD_EN				DESIGN	APPROVED
Junction to the chimney. The roof slope from 12 to 18 degrees				SCALE	DATE
REV.	DATE	DESCRIPTION	CHECKED	DWG No. 8.1 - 2021.11	REV.

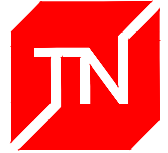
1 - 1

- TECHNONICOL roofing shingles
- Underlayment membrane of UNDERLAY series
- Solid base (OSB-3 or plywood)
- Counter-batten
- Diffusion membrane TECHNOMICOL ALPHA
- Stone wool slabs TECHNOLITE EXTRA
- Vapor barrier film TECHNOMICOL ALPHA
- Gypsum board 12.5 mm in two layers

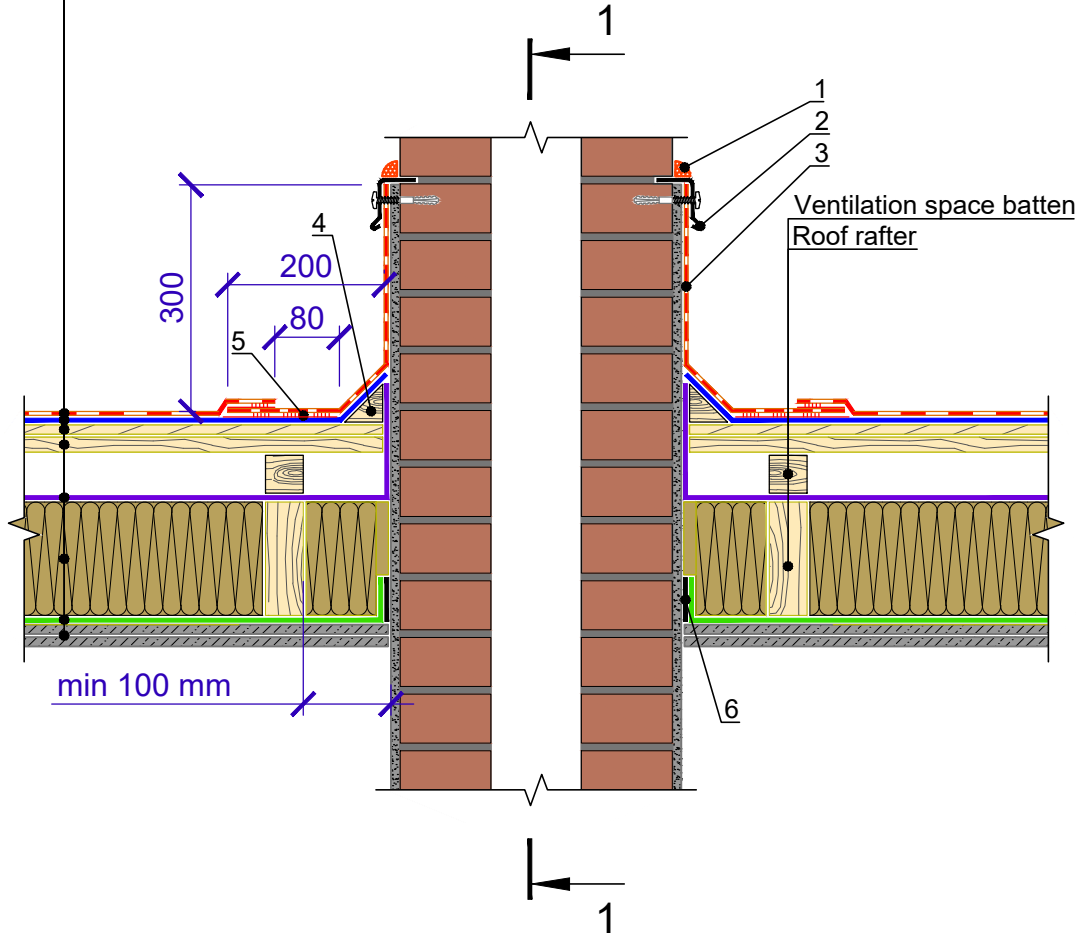


Specification of detail DWG No. 8.2 - 2021.11

Position	Name	Consumption	Unit	Note	
1	Polyurethane sealant	0.15	kg		
2	Metal flashing	0.5	pcs.	length 2 m	
3	Valley roll material	0.5	m ²		
4	Wood skirting	upon the project	pcs.		
5	Mastic TECHNOMICOL FIXER	0.75	kg		
6	Adhesive tape	upon the project	m		
TN_SHINGLES_MANSARD_EN				DESIGN	APPROVED
Junction to the chimney. The roof slope from 12 to 18 degrees. Section 1-1				SCALE	DATE
				DWG No. 8.2 - 2021.11	REV.
REV.	DATE	DESCRIPTION	CHECKED		



TECHNONICOL roofing shingles
 Underlayment membrane of UNDERLAY series
 Solid base (OSB-3 or plywood)
 Counter-batten
 Diffusion membrane TECHNOMICOL ALPHA
 Stone wool slabs TECHNOLITE EXTRA
 Vapor barrier film TECHNOMICOL ALPHA
 Gypsum board 12.5 mm in two layers



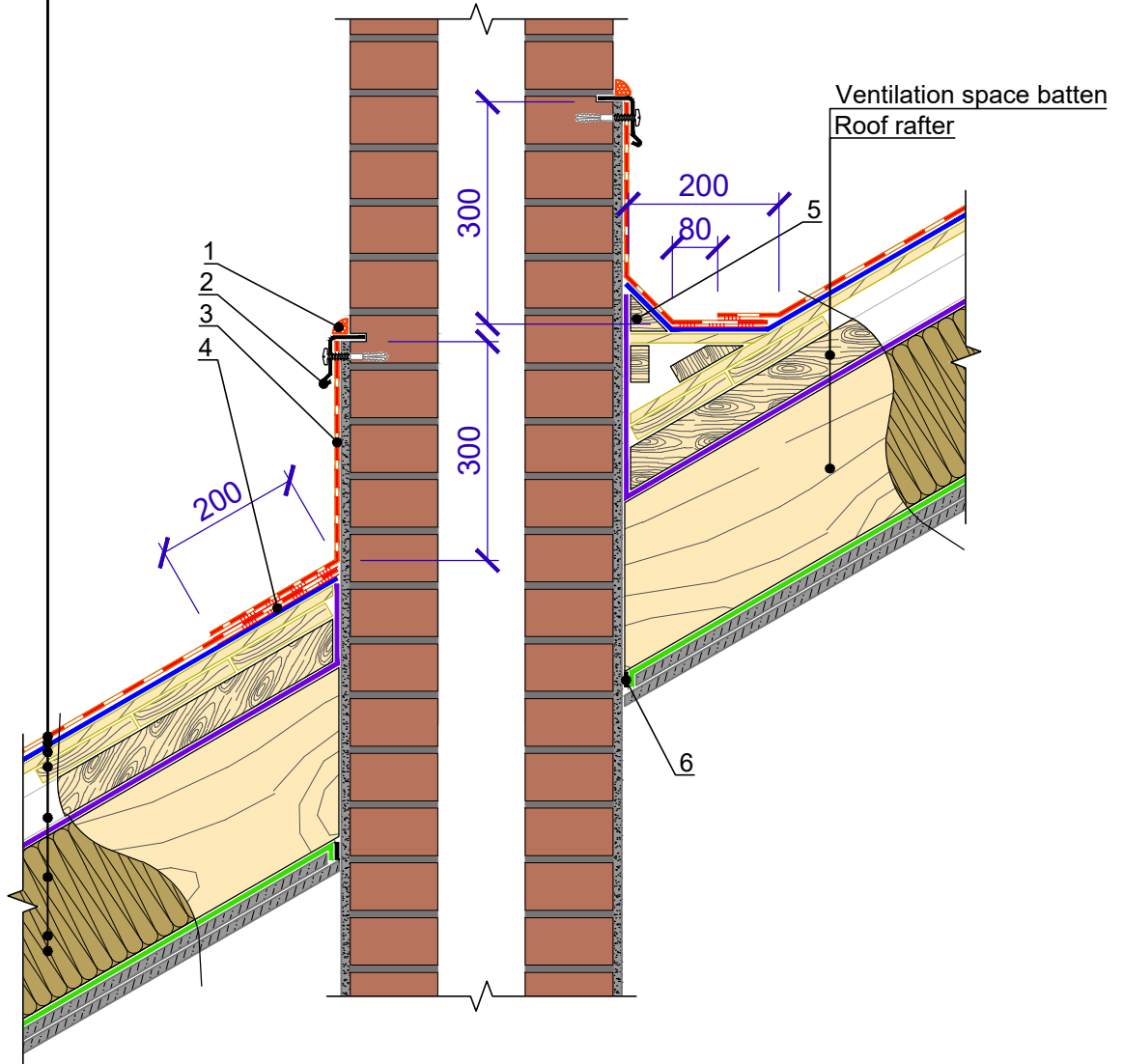
Specification of detail DWG No. 8.3 - 2021.11

Position	Name	Consumption	Unit	Note	
1	Polyurethane sealant	0.15	kg		
2	Metal flashing	0.5	pcs.	length 2 m	
3	Valley roll material	0.5	m ²		
4	Wood skirting	upon the project	pcs.		
5	Mastic TECHNOMICOL FIXER	0.75	kg		
6	Adhesive tape	upon the project	m		
				DESIGN	APPROVED
				SCALE	DATE
REV.	DATE	DESCRIPTION	CHECKED	DWG No. 8.3 - 2021.11	REV.

Junction to the chimney. The roof slope more than 18 degrees



TECHNONICOL roofing shingles 2 - 2
 Underlayment membrane of UNDERLAY series
 Solid base (OSB-3 or plywood)
 Counter-batten
 Diffusion membrane TECHNOMICOL ALPHA
 Stone wool slabs TECHNOLITE EXTRA
 Vapor barrier film TECHNOMICOL ALPHA
 Gypsum board 12.5 mm in two layers

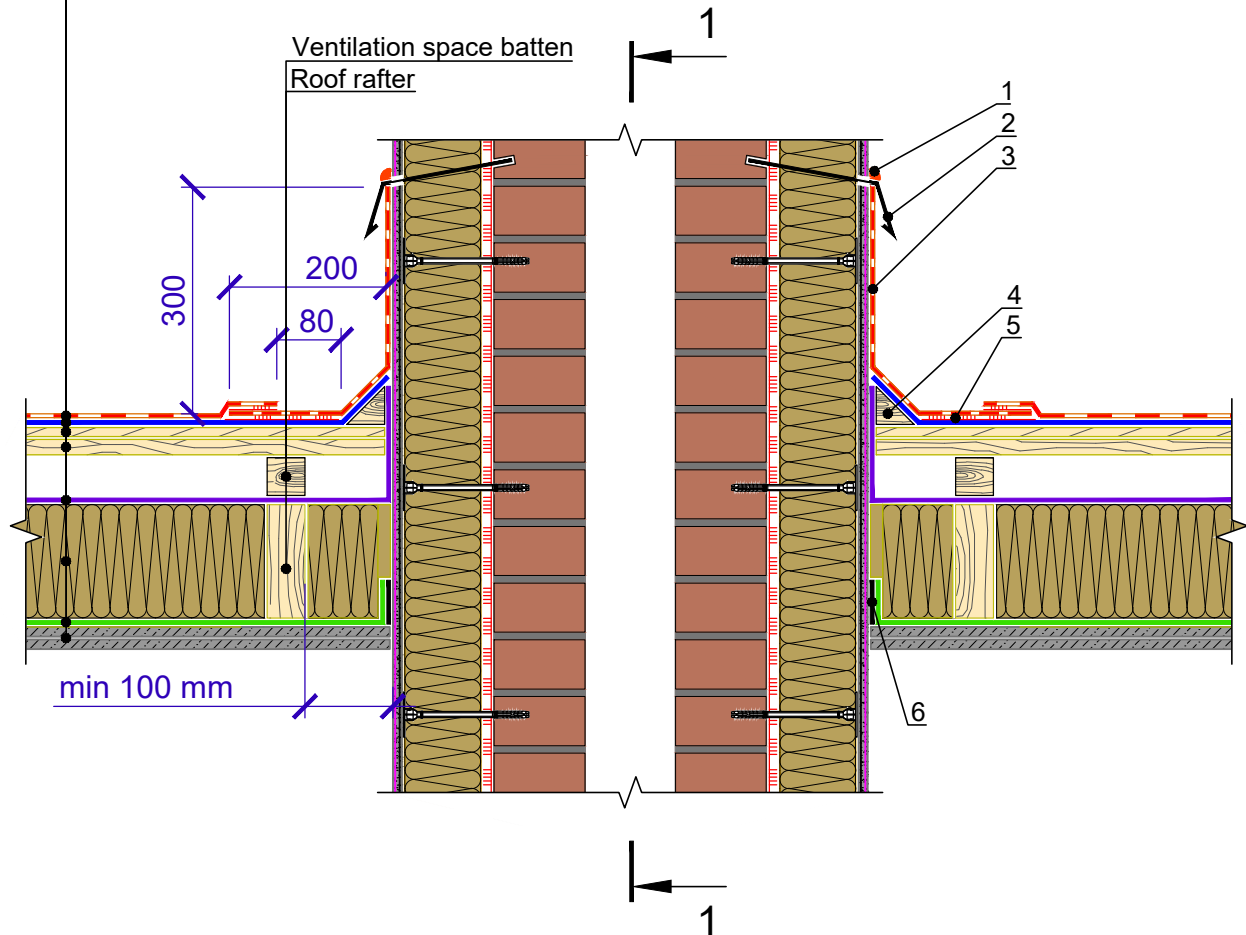


Specification of detail DWG No. 8.4 - 2021.11

Position	Name	Consumption	Unit	Note	
1	Polyurethane sealant	0.15	kg		
2	Metal flashing	0.5	pcs.	length 2 m	
3	Valley roll material	0.5	m ²		
4	Wood skirting	upon the project	pcs.		
5	Mastic TECHNOMICOL FIXER	0.75	kg		
6	Adhesive tape	upon the project	m		
TN_SHINGLES_MANSARD_EN				DESIGN	APPROVED
Junction to the chimney. The roof slope more than 18 degrees. Section 2-2				SCALE	DATE
				DWG No. 8.4 - 2021.11	REV.
REV.	DATE	DESCRIPTION	CHECKED		

1 - 1

TECHNONICOL roofing shingles
Underlayment membrane of UNDERLAY series
Solid base (OSB-3 or plywood)
Counter-batten
Diffusion membrane TECHNOMICOL ALPHA
Stone wool slabs TECHNOLITE EXTRA
Vapor barrier film TECHNOMICOL ALPHA
Gypsum board 12.5 mm in two layers



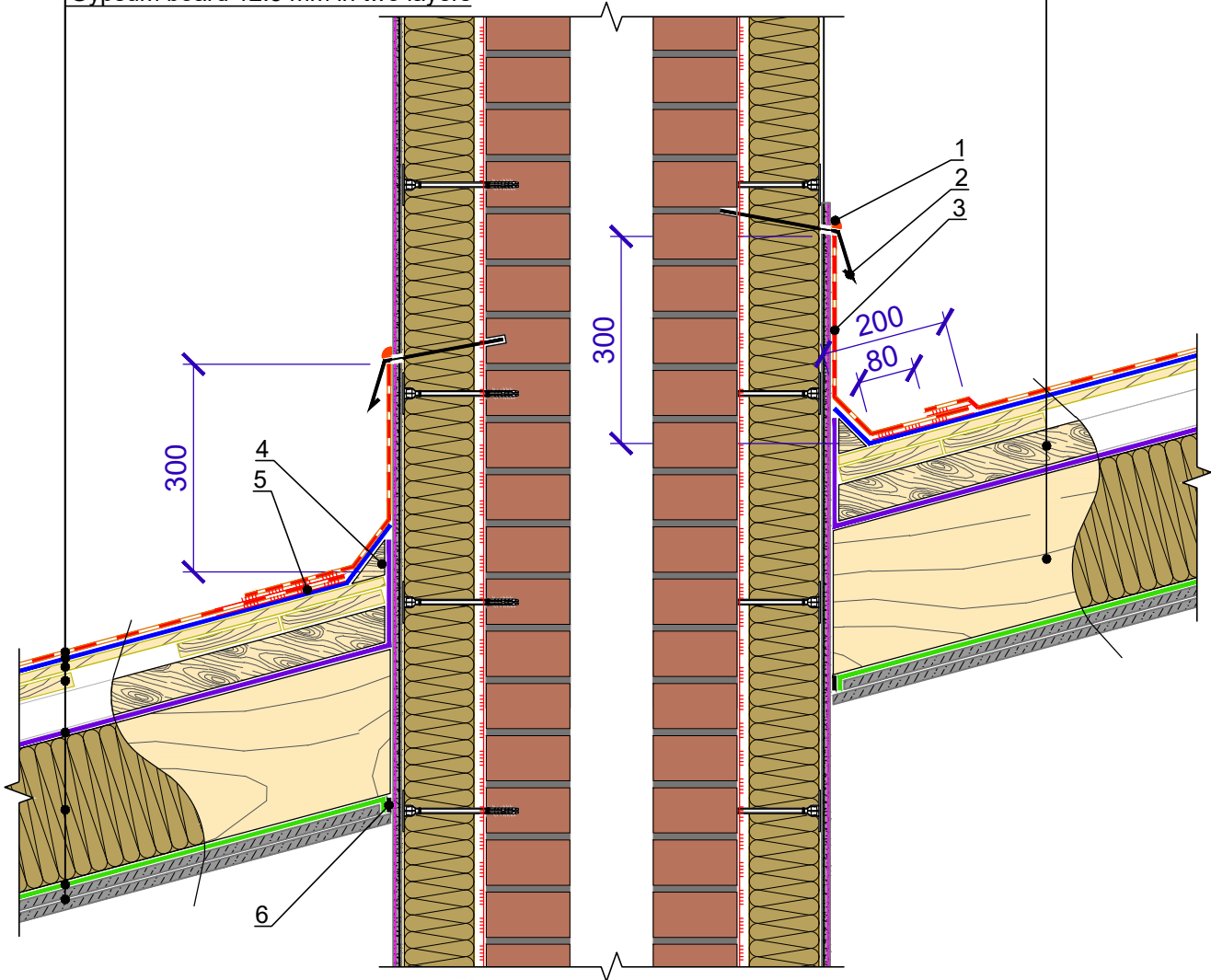
Specification of detail DWG No. 8.5 - 2021.11

Position	Name	Consumption	Unit	Note	
1	Polyurethane sealant	0.15	kg		
2	Metal flashing	0.5	pcs.	length 2 m	
3	Valley roll material	0.5	m ²		
4	Wood skirting	upon the project	pcs.		
5	Mastic TECHNOMICOL FIXER	0.75	kg		
6	Adhesive tape	upon the project	m		
TN_SHINGLES_MANSARD_EN				DESIGN	APPROVED
Junction to the insulated chimney. The roof slope from 12 to 18 degrees				SCALE	DATE
				DWG No. 8.5 - 2021.11	REV.
REV.	DATE	DESCRIPTION	CHECKED		



TECHNONICOL roofing shingles
Underlayment membrane of UNDERLAY series
Solid base (OSB-3 or plywood)
Counter-batten
Diffusion membrane TECHNOLITE ALPHA
Stone wool slabs TECHNOLITE EXTRA
Vapor barrier film TECHNOLITE ALPHA
Gypsum board 12.5 mm in two layers

Ventilation space batten
Roof rafter

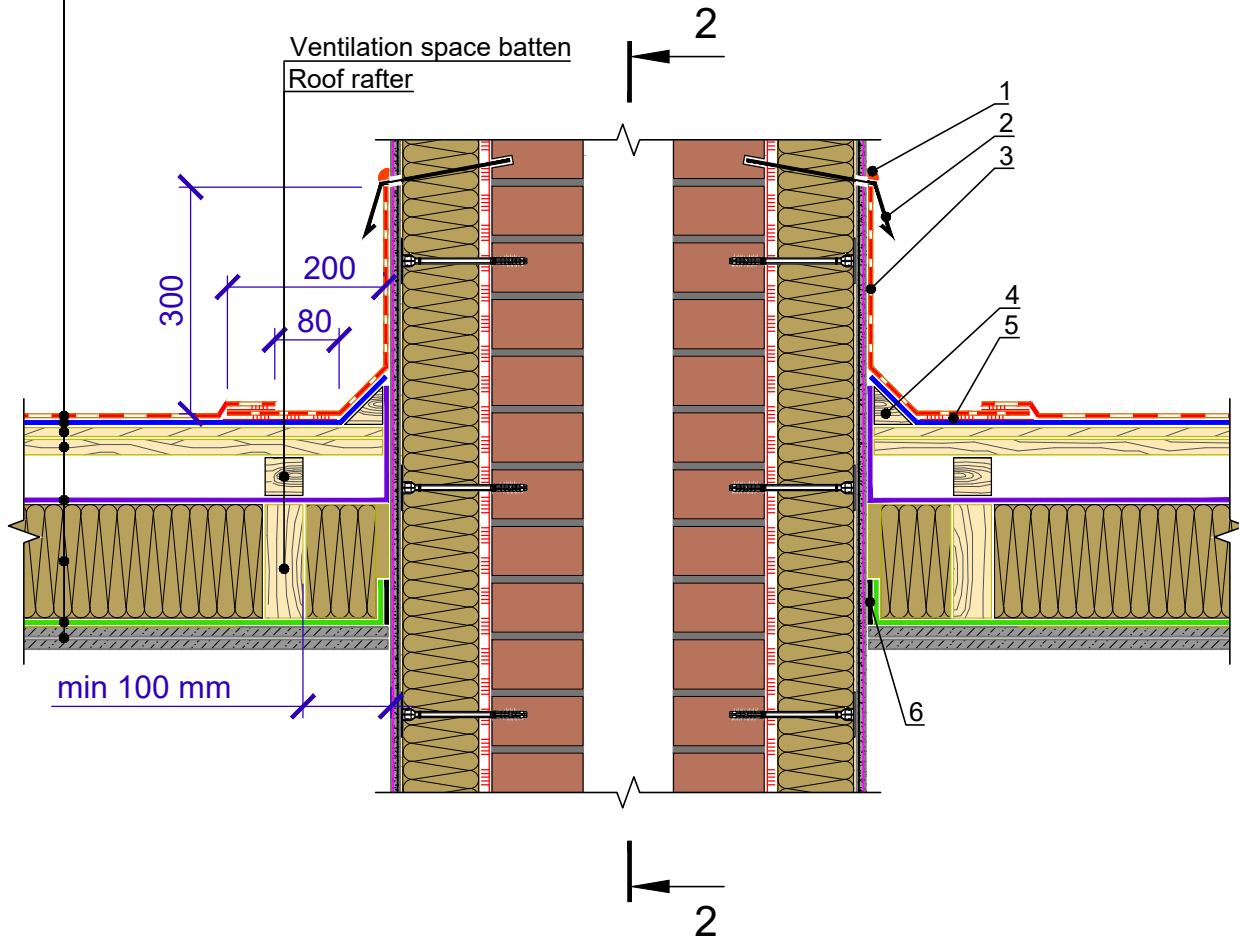


Specification of detail DWG No. 8.6 - 2021.11

Position	Name	Consumption	Unit	Note	
1	Polyurethane sealant	0.15	kg		
2	Metal flashing	0.5	pcs.	length 2 m	
3	Valley roll material	0.5	m ²		
4	Wood skirting	upon the project	pcs.		
5	Mastic TECHNOLIC FIXER	0.75	kg		
6	Adhesive tape	upon the project	m		
TN_SHINGLES_MANSARD_EN				DESIGN	APPROVED
Junction to the insulated chimney. The roof slope from 12 to 18 degrees. Section 1-1				SCALE	DATE
				DWG No. 8.6 - 2021.11	REV.
REV.	DATE	DESCRIPTION	CHECKED		



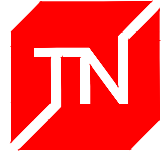
TECHNONICOL roofing shingles
Underlayment membrane of UNDERLAY series
Solid base (OSB-3 or plywood)
Counter-batten
Diffusion membrane TECHNOMICOL ALPHA
Stone wool slabs TECHNOLITE EXTRA
Vapor barrier film TECHNOMICOL ALPHA
Gypsum board 12.5 mm in two layers



Specification of detail DWG No. 8.7 - 2021.11

Position	Name	Consumption	Unit	Note
1	Polyurethane sealant	0.15	kg	
2	Metal flashing	0.5	pcs.	length 2 m
3	Valley roll material	0.5	m ²	
4	Wood skirting	upon the project	pcs.	
5	Mastic TECHNOMICOL FIXER	0.75	kg	
6	Adhesive tape	upon the project	m	

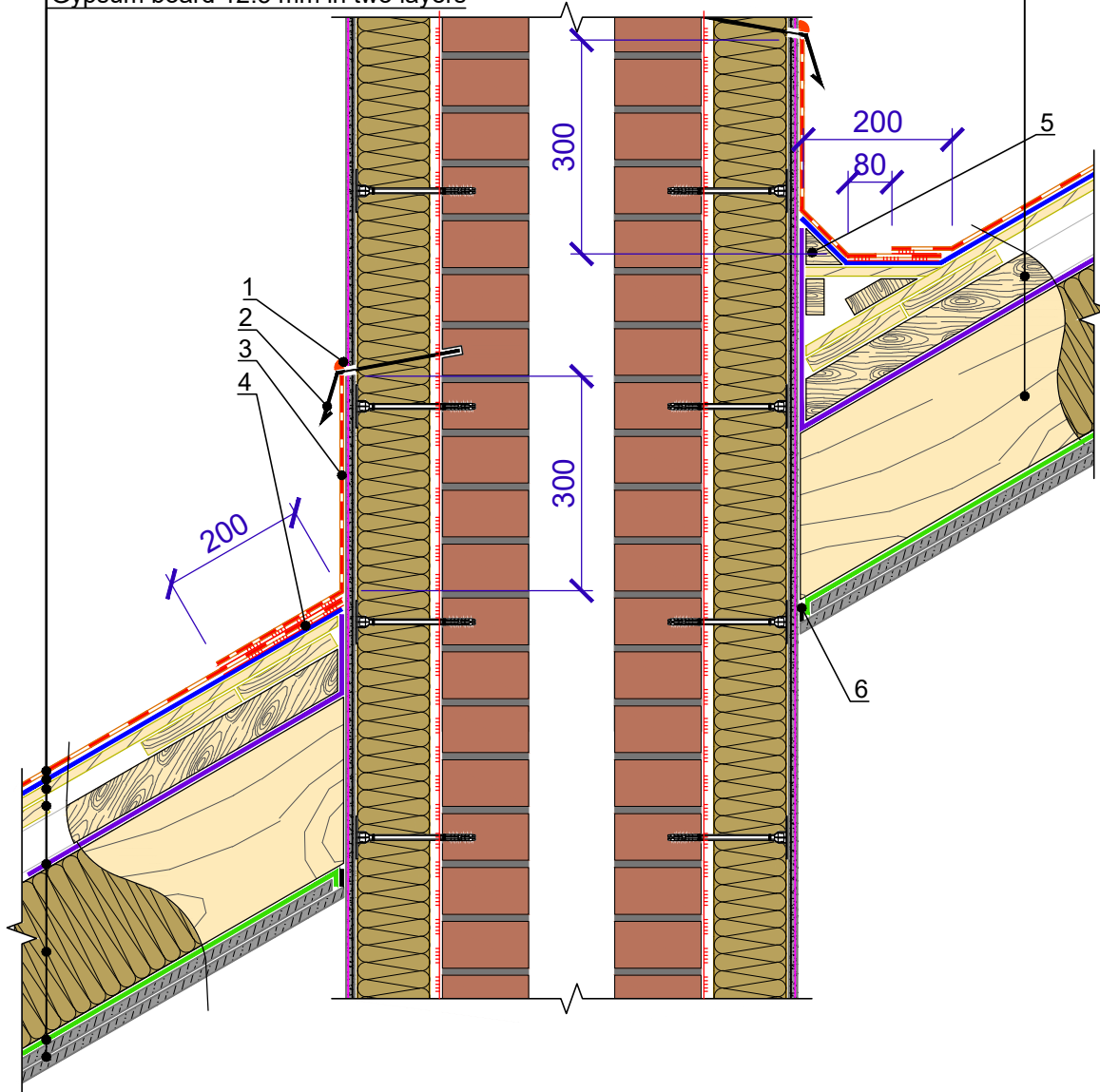
				TN_SHINGLES_MANSARD_EN		DESIGN	APPROVED
				Junction to the insulated chimney. The roof slope more than 18 degrees		SCALE	DATE
REV.	DATE	DESCRIPTION	CHECKED			DWG No. 8.7 - 2021.11	REV.



TECHNONICOL roofing shingles
Underlayment membrane of UNDERLAY series
Solid base (OSB-3 or plywood)
Counter-batten
Diffusion membrane TECHNOMIC ALPHA
Stone wool slabs TECHNOLITE EXTRA
Vapor barrier film TECHNOMIC ALPHA
Gypsum board 12.5 mm in two layers

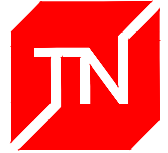
2 - 2

Ventilation space batten
Roof rafter

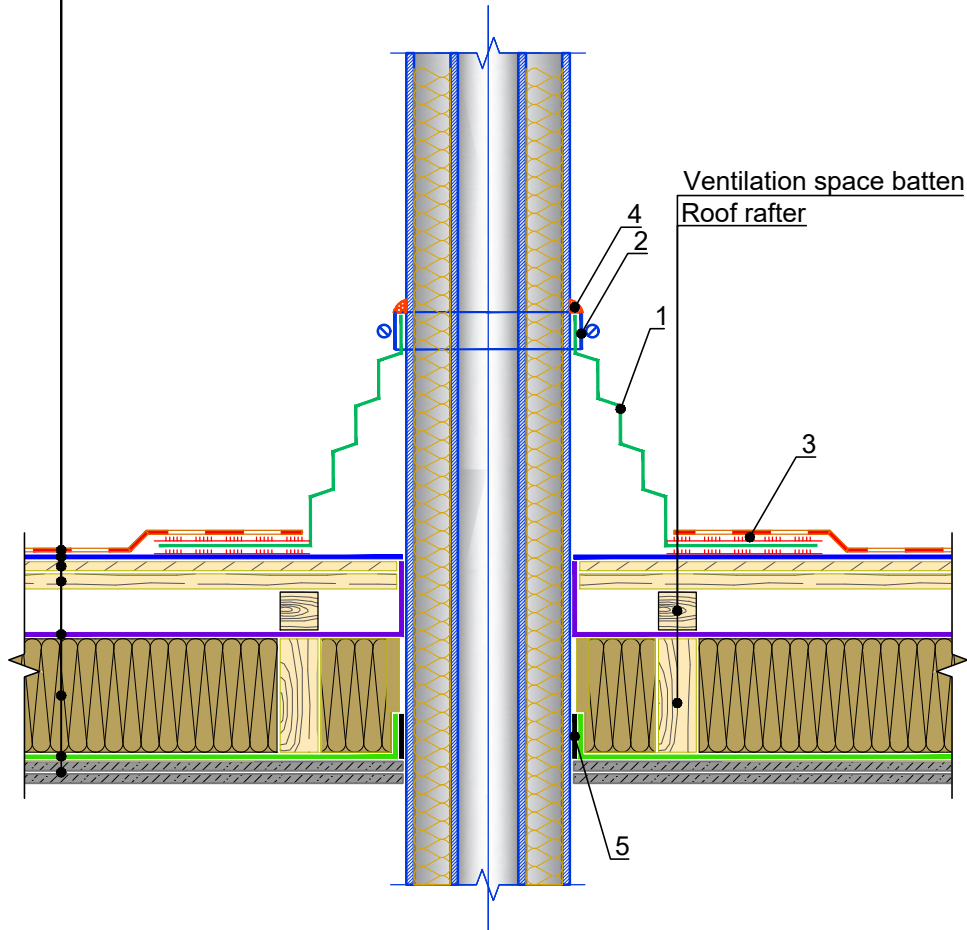


Specification of detail DWG No. 8.8 - 2021.11

Position	Name	Consumption	Unit	Note	
1	Polyurethane sealant	0.15	kg		
2	Metal flashing	0.5	pcs.	length 2 m	
3	Valley roll material	0.5	m ²		
4	Wood skirting	upon the project	pcs.		
5	Mastic TECHNOMIC FIXER	0.75	kg		
6	Adhesive tape	upon the project	m		
TN_SHINGLES_MANSARD_EN				DESIGN	APPROVED
Junction to the insulated chimney. The roof slope more than 18 degrees. Section 2-2				SCALE	DATE
				DWG No. 8.8 - 2021.11	REV.
REV.	DATE	DESCRIPTION	CHECKED		



TECHNONICOL roofing shingles
 Underlayment membrane of UNDERLAY series
 Solid base (OSB-3 or plywood)
 Counter-batten
 Diffusion membrane TECHNOMICOL ALPHA
 Stone wool slabs TECHNOLITE EXTRA
 Vapor barrier film TECHNOMICOL ALPHA
 Gypsum board 12.5 mm in two layers

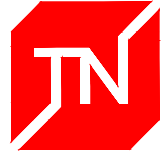


Specification of detail DWG No. 8.9 - 2021.11

Position	Name	Consumption	Unit	Note	
1	Rubber collar	1	pcs.		
2	Clamp	1	pcs.		
3	Mastic TECHNOMICOL FIXER	0.75	kg		
4	Polyurethane sealant	0.15	kg		
5	Adhesive tape	upon the project	m		
			DESIGN	APPROVED	
			SCALE	DATE	
REV.	DATE	DESCRIPTION	CHECKED	DWG No. 8.9 - 2021.11	REV.

TN_SHINGLES_MANSARD_EN

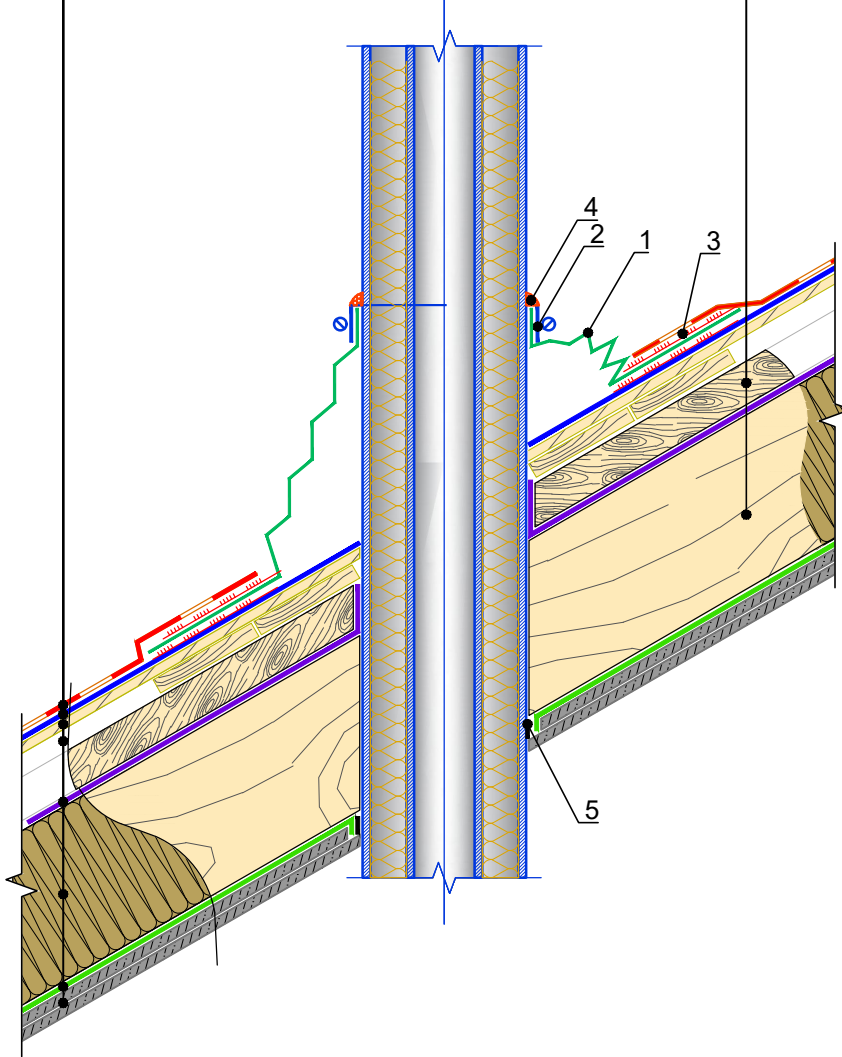
Junction to the pipe penetration with the use of rubber collar



1 - 1

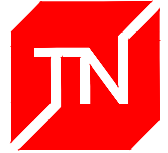
TECHNONICOL roofing shingles
Underlayment membrane of UNDERLAY series
Solid base (OSB-3 or plywood)
Counter-batten
Diffusion membrane TECHNOMICOL ALPHA
Stone wool slabs TECHNOLITE EXTRA
Vapor barrier film TECHNOMICOL ALPHA
Gypsum board 12.5 mm in two layers

Ventilation space batten
Roof rafter

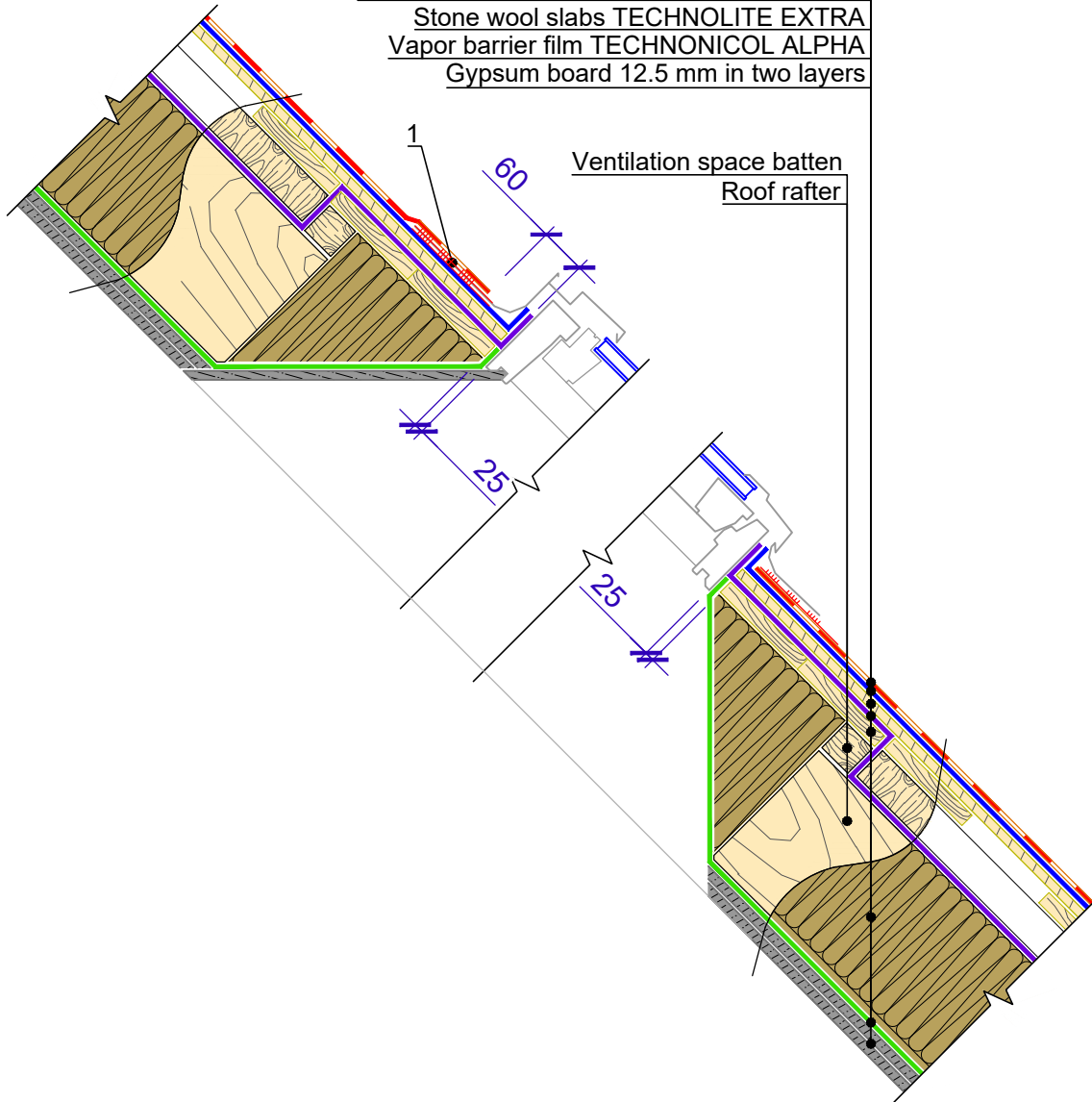


Specification of detail DWG No. 8.10 - 2021.11

Position	Name	Consumption	Unit	Note	
1	Rubber collar	1	pcs.		
2	Clamp	1	pcs.		
3	Mastic TECHNOMICOL FIXER	0.75	kg		
4	Polyurethane sealant	0.15	kg		
5	Adhesive tape	upon the project	m		
TN_SHINGLES_MANSARD_EN				DESIGN	APPROVED
Junction to the pipe penetration with the use of rubber collar. Section 1-1				SCALE	DATE
				DWG No. 8.10 - 2021.11	REV.
REV.	DATE	DESCRIPTION	CHECKED		

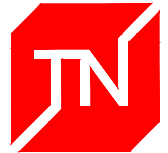


- TECHNONICOL roofing shingles
- Underlayment membrane of UNDERLAY series
- Solid base (OSB-3 or plywood)
- Counter-batten
- Diffusion membrane TECHNOMICOL ALPHA
- Stone wool slabs TECHNOLITE EXTRA
- Vapor barrier film TECHNOMICOL ALPHA
- Gypsum board 12.5 mm in two layers

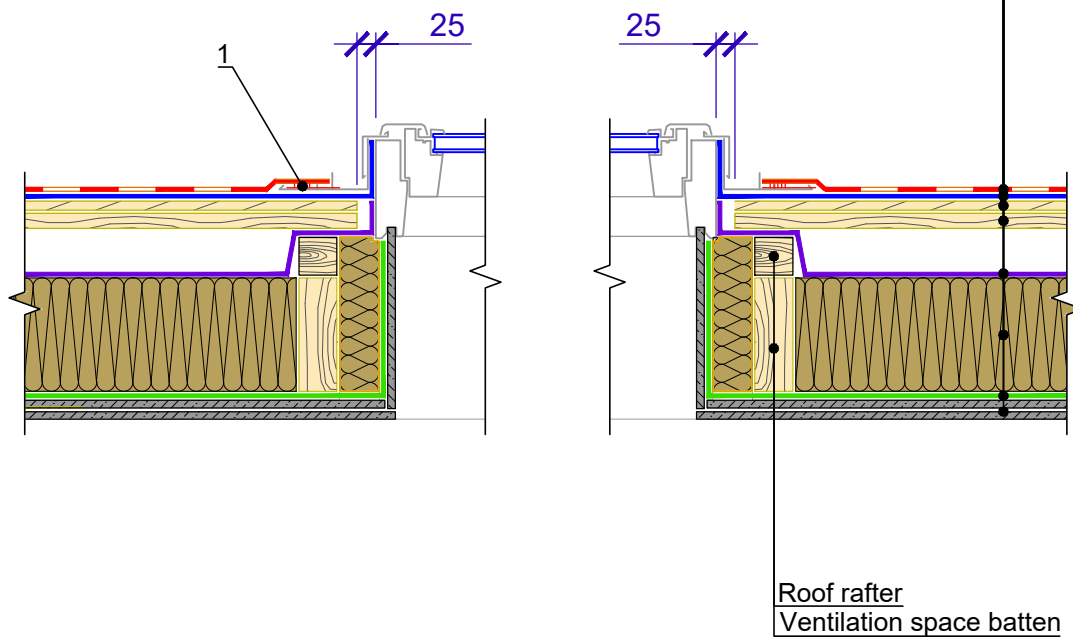


Specification of detail DWG No. 9.1 - 2021.11

Position	Name	Consumption	Unit	Note	
1	Mastic TECHNOMICOL FIXER	0.75	kg		
TN_SHINGLES_MANSARD_EN				DESIGN	APPROVED
Junction to skylight window. Longitudinal section				SCALE	DATE
				DWG No. 9.1 - 2021.11	REV.
REV.	DATE	DESCRIPTION	CHECKED		



- TECHNONICOL roofing shingles
- Underlayment membrane of UNDERLAY series
- Solid base (OSB-3 or plywood)
- Counter-batten
- Diffusion membrane TECHNOMICOL ALPHA
- Stone wool slabs TECHNOLITE EXTRA
- Vapor barrier film TECHNOMICOL ALPHA
- Gypsum board 12.5 mm in two layers



Specification of detail DWG No. 9.2 - 2021.11

Position	Name	Consumption	Unit	Note	
1	Mastic TECHNOMICOL FIXER	0.75	kg		
TN_SHINGLES_MANSARD_EN				DESIGN	APPROVED
Junction to skylight window. Cross section				SCALE	DATE
				DWG No. 9.2 - 2021.11	REV.
REV.	DATE	DESCRIPTION	CHECKED		