



TECHNOSAFING

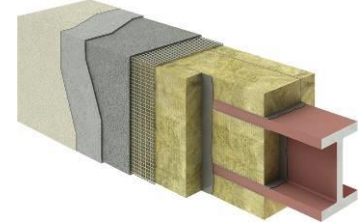
Stone wool slabs used as thermal insulation and fire protection of metal structures

Product description

TECHNOSAFING is the nonflammable, water-repellent thermal and sound insulation slabs of mineral wool based on basalt rocks.

Area of application

TECHNOSAFING slabs are used in civil and industrial construction as thermal insulation and fire protection of metal structures, including profiled steel decking. The material provides fire resistance of metal structures up to 240 minutes with no additional protective coatings required.



Storage

The slabs must be stored in covered warehouses. The slabs shall be stored in containers or stacked on the pallets or on the supports during the whole period of storage. The height of the stack shall not exceed 3 meters. Shelf life if all storage requirements are met: 6 months from the date of production.

Main characteristics

Essential characteristics	Performance	Harmonized technical specification	
Density, kg/m ³	160±15	EN 1602	EN 13162:2012 + A1:2015
Length, mm	1200, 2400 (±2%)	EN 822	
Width, mm	600, 1200 (±2%)	EN 822	
Thickness (with increments of 10 mm), mm	30-140	EN 823	
Maximum service temperature, °C	680	EN 14706	
Reaction to fire, Euroclass	A1	EN 13501-1	
Water absorption during short term immersion, kg/m ²	WS < 1	EN 1609	
Declared thermal conductivity at 10°C, W/m*K	0.037	EN 12667	
Declared thermal conductivity at 25°C, W/m*K	0.039	EN 12667	