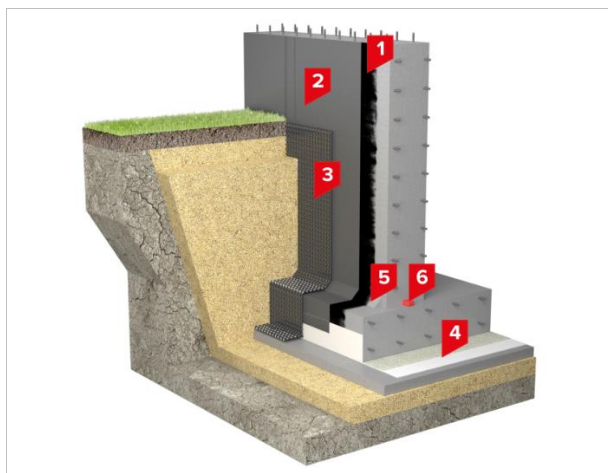




## TN FOUNDATION PREAPPLIED HDPE-BRM SA

Waterproofing solution for a foundation with HDPE and polymer-bitumen self-adhesive membrane.



### Area of application

The system is designed for underground waterproofing of buildings and structures erected in pits with backfilling, in soils with the presence of one or more aquifers of high capacity and hydrostatic pressure.

### Advantages



Quick installation



No protection screed required



Fully-adhered system



High reliability

### System composition and material consumption rates

No.	Material	Unit	Thickness, mm	Consumption rate*
1	BITUMEN-POLYMER PRIME COATING	l	—	0.25-0.35
2	ULTRAFLEX SA 7000-X (SBS)	m <sup>2</sup>	1.5	1.15
3	PLANTER Eco dimpled membrane**	m <sup>2</sup>	8	1.15
4	ULTRABASE PA Sand Finish	m <sup>2</sup>	1.5-2.0	1.15
5	Fillet	—	—	acc. to calculation
6	TECHNONICOL swellable water bar	r.m.	—	acc. to calculation

\* The consumption rates are taken conditionally – according to the manufacturer's recommendations.

\*\* Alternatively, 25-50mm thick XPS boards can be used to protect the waterproofing.

### Technical description

The fully adhered waterproofing system consists of non-reinforced HDPE membrane with sand finishing ULTRABASE Sand Finish and self-adhesive polymer-bitumen membrane Ultraflex SA 7000-X.

ULTRABASE Sand Finish HDPE membrane is laid on the prepared base sandy side upwards. The membrane overlaps are sealed due to free from sand self-adhesive edges. For transversal overlaps special double-side self-adhesive band is used. No protection of the membrane with a sand-cement screed is required. After pouring the concrete of the foundation slab, the membrane securely bonds to the concrete.

After casting of the foundation walls the self-adhesive polymer-bitumen membrane Ultraflex SA 7000-X is installed. Prior to membrane installation, the surface must be treated with bitumen-polymer prime coating. Due to self-adhesive edges, the overlaps of adjacent membrane sheets are securely sealed.

Once the membrane on the foundation wall is installed, it must be protected from the mechanical damages during backfilling with 8 mm HDPE dimpled sheets or 25-50mm XPS boards.